



Le Capelain La Rue De L'etau, Jersey JE2 3EA

APT 347 Qualified £598,500 A great opportunity to purchase a chain free stunning sea facing second floor apartment set within the prestigious Marina development of Castle Quay. With a larger than average balcony which leads out from the Living area and Master bedroom this west facing apartment has fantastic views over the Marina, Castle and St Aubins bay. It briefly comprises; open plan living area, fully fitted kitchen with polished granite worktops and Miele appliances, 2 double bedrooms and 2 bathrooms. The apartment also benefits from lift access and underground, secure parking space, Within easy walking distance to fabulous restaurants and leisure facilities. Perfect for investment or to make a wonderful home. Call one of our team for a viewing today

- Stunning Location with views across the harbour to Elizabeth Castle
- Large open plan living Area
- 2 Double Bedrooms, 2 Bathrooms
- Walk to work, close to all town amenities
- Convenient waterfront location
- Secure underground parking space

£598,500

Le Capelain La Rue De L'etau, Jersey, JE2 3EA

Lounge/ Diner/ Kitchen

21'12 x 13'10 (6.40m x 4.22m)

Large lounge with Amtico flooring Kitchen/ diner with double doors to balcony area over looking the marina. Kitchen is fully fitted with Miele appliances.

Master Bedroom

24'11 x 9'6 (7.59m x 2.90m)

Door to balcony area overlooking the marina, Built in wardrobes

En-Suite shower room

5'5 x 7'3 (1.65m x 2.21m)

Shower, WC and handbasin

2nd Bedroom

12'5 x 9'10 (3.78m x 3.00m)

Good sized double room, Built in wardrobe

Bathroom

6'3 x 7'3 (1.91m x 2.21m)

Bath with shower over, WC and Hand basin

Utility

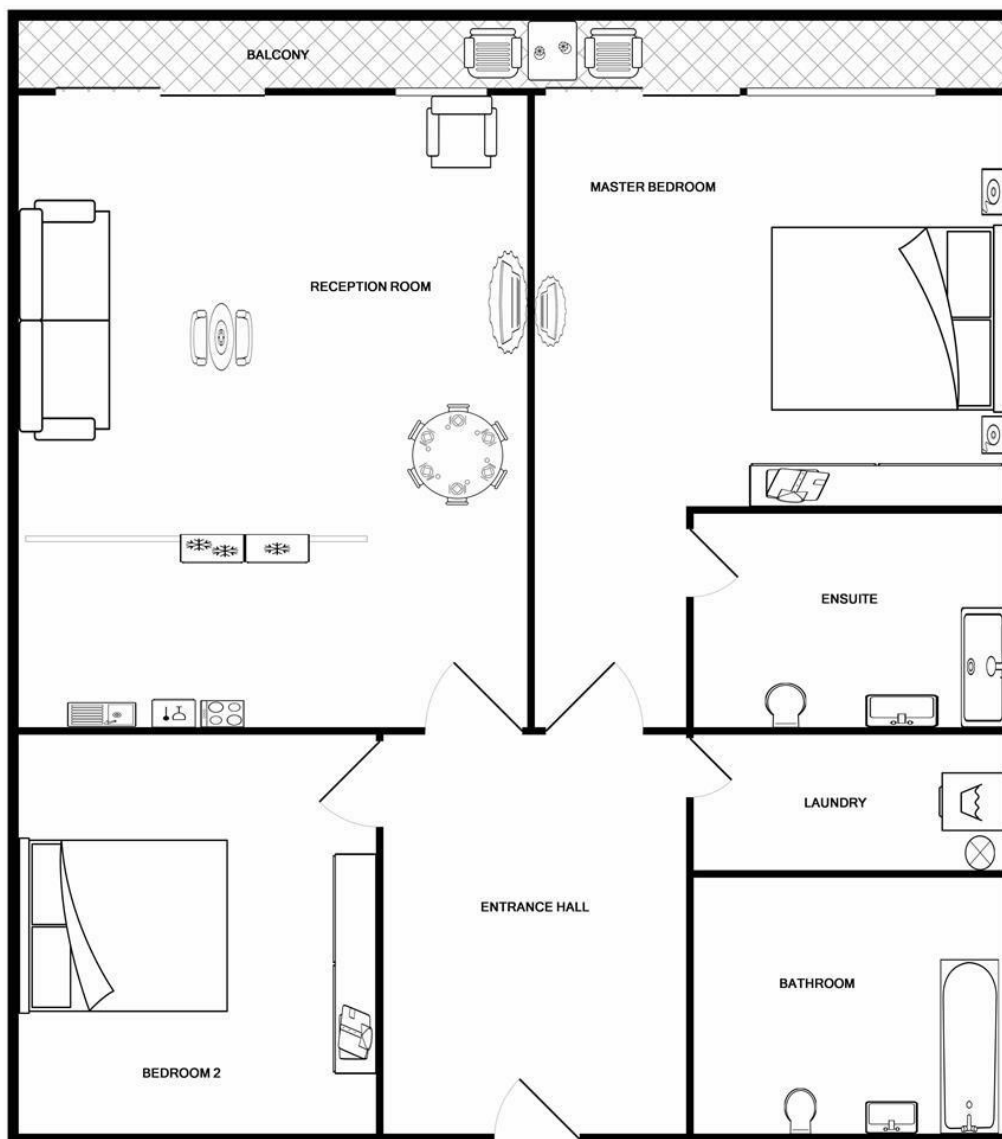
Washer/ Dryer

Parking

1 under cover parking space with the option of 2 at an additional cost







Whilst every attempt has been made to ensure the accuracy of the floor plan contained here, measurements of doors, windows, rooms and any other items are approximate and no responsibility is taken for any error, omission, or mis-statement. This plan is for illustrative purposes only and should be used as such by any prospective purchaser. The services, systems and appliances shown have not been tested and no guarantee as to their operability or efficiency can be given.
Made with Metropix ©2018

