



Cutler&Bond

LOWER GROUND FLOOR FLATS

Kensington Office
T: 020 7938 3322
F: 020 7938 4343
E: info@cutlerandbond.com



Chelsea Embankment, Chelsea

£1,250,000 Share of Freehold

Viewings 7 days a week - view this property today. A superb and spacious three bedroom apartment of 1112 sq ft (103.3 sq m) set within a beautiful period apartment building on the sought-after Chelsea Embankment. The apartment boasts an impressive reception room opening onto a spacious private courtyard, three south-facing bedrooms, and share of the freehold.

The apartment building is located on the very smart section of Chelsea Embankment between Swan Walk and Tite Street and has beautiful views over the Thames towards the Peace Pagoda in Battersea.

Key features:

- Substantial reception with fitted storage and fireplace
- Impressive courtyard with space to entertain
- Three bedrooms with fitted wardrobes
- Master bedroom with en-suite shower room
- Family bathroom with separate shower
- Beautifully presented traditional Victorian mansion building
- Lease in excess of 900 years with a share of the freehold



Cutler&Bond

LOWER GROUND FLOOR FLATS

Kensington Office
T: 020 7938 3322
F: 020 7938 4343
E: info@cutlerandbond.com

- Three bedrooms
- Beautiful Chelsea river location
- Fabulous and large terrace
- Share of freehold
- Large reception room
- Wonderful entrance hall

Chelsea Embankment, Chelsea

£1,250,000 Share of Freehold

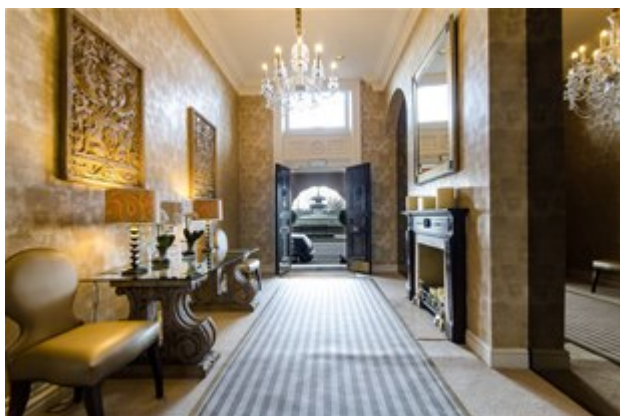
Service charge: £4223.43 per annum (NB includes contribution toward a sinking fund and buildings insurance)

Tenure: Share of freehold

Price: £1,250,000 stc

Chelsea Embankment, Chelsea

£1,250,000 Share of Freehold



Chelsea Embankment, Chelsea

£1,250,000 Share of Freehold



Chelsea Embankment, Chelsea

£1,250,000 Share of Freehold



Chelsea Embankment, Chelsea

£1,250,000 Share of Freehold



LOWER GROUND FLOOR

APPROXIMATE GROSS INTERNAL AREA
1112 SQ FT / 103.3 SQ M

Representation of current layout, gross internal floor area is approximately 1,112 Sq Ft (103 Sq M)