



**Daniel Road | Ealing | W5 3RY**

**£4, 200 per month**

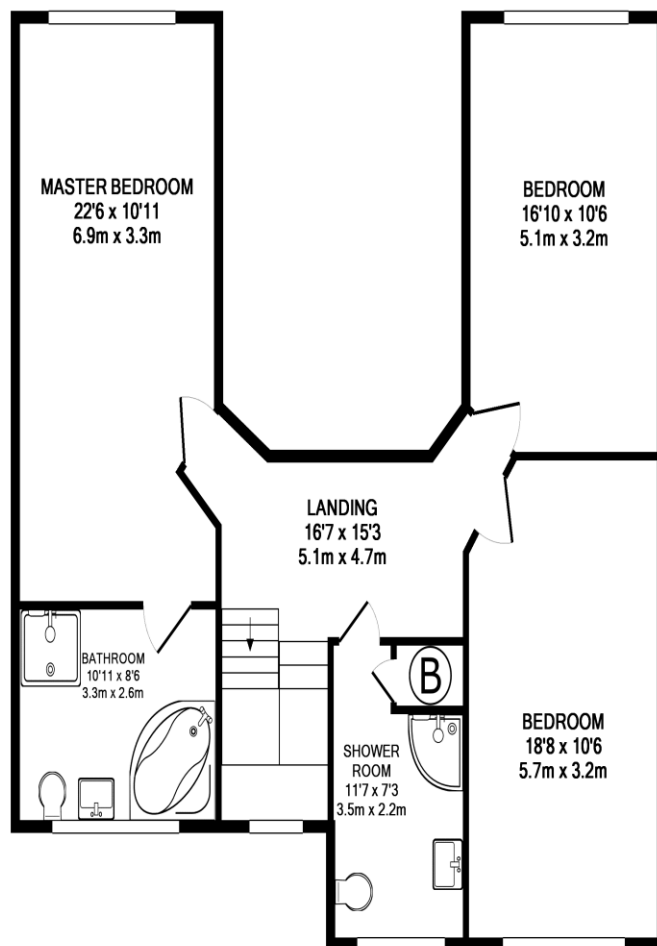
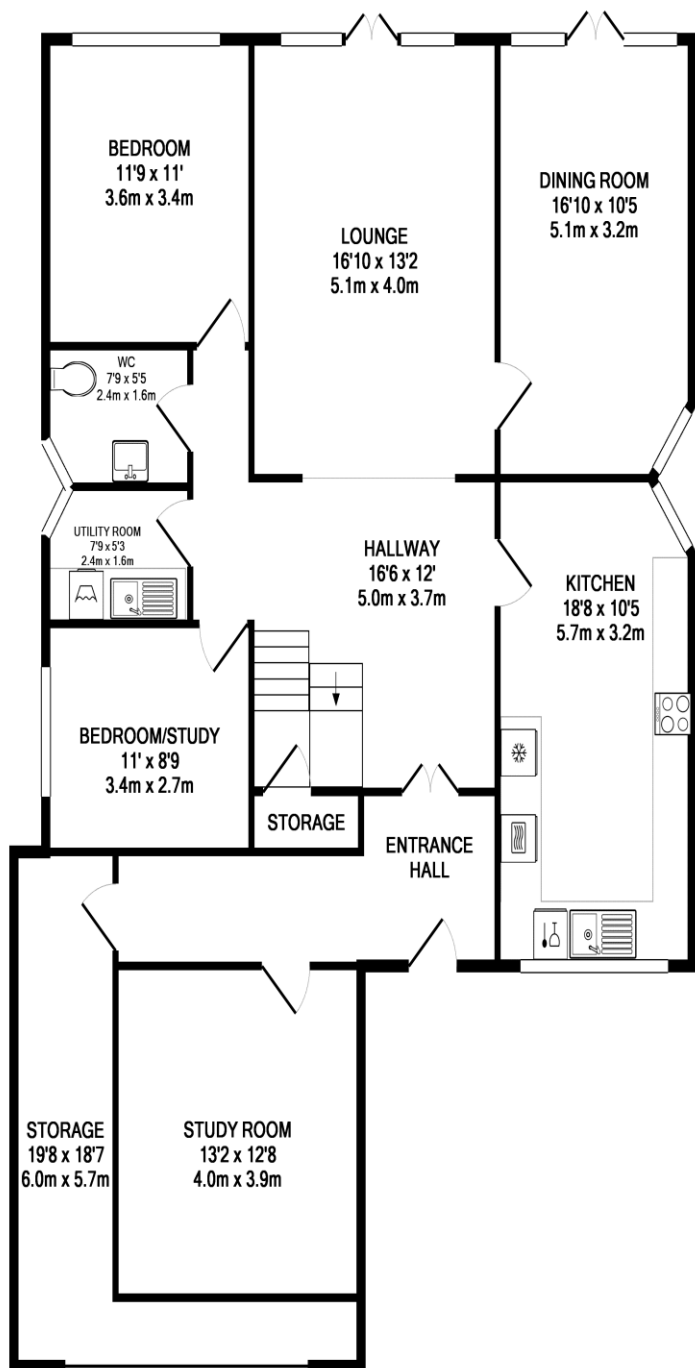
An impressive five bedroom detached house finished to a spectacular standard situated in the heart of Ealing. The property is fully furnished and comprises of the following; five good size bedrooms, an extensive lounge overlooking the garden, dining room, large modern kitchen, utility room, cloakroom, study room, side storage, a bath and shower ensuite, family shower room and driveway.

Close to Ealing Common tube station (Piccadilly & District lines) and West Acton tube station (Central line) and bus service from Hanger Lane and access to the A40 and North Circular Road.

Local schools in the area include The Ellen Wilkinson School for Girls, The Holy Family Catholic School, West Acton Primary School, The Japanese School and Twyford C of E High School.

**Available Now.**

Tenant fees apply: £180 tenancy handling fee (Inclusive of VAT); £60 referencing fee per adult (Inclusive of VAT). Other fees may apply.



TOTAL APPROX. FLOOR AREA 2447 SQ.FT. (227.3 SQ.M.)

Whilst every attempt has been made to ensure the accuracy of the floor plan contained here, measurements of doors, windows, rooms and any other items are approximate and no responsibility is taken for any error, omission, or mis-statement. This plan is for illustrative purposes only and should be used as such by any prospective purchaser. The services, systems and appliances shown have not been tested and no guarantee as to their operability or efficiency can be given  
Made with Metropix ©2013

## Contact Details

Sales, Lettings & Property  
Management

2 Queens Drive,  
West Acton,  
London,  
W3 0HA

[www.japanservices.co.uk](http://www.japanservices.co.uk)  
[properties@japanservices.co.uk](mailto:properties@japanservices.co.uk)  
0208 752 0445

