



Tudor Gardens | West Acton | W3 0DU

£2, 500 per month

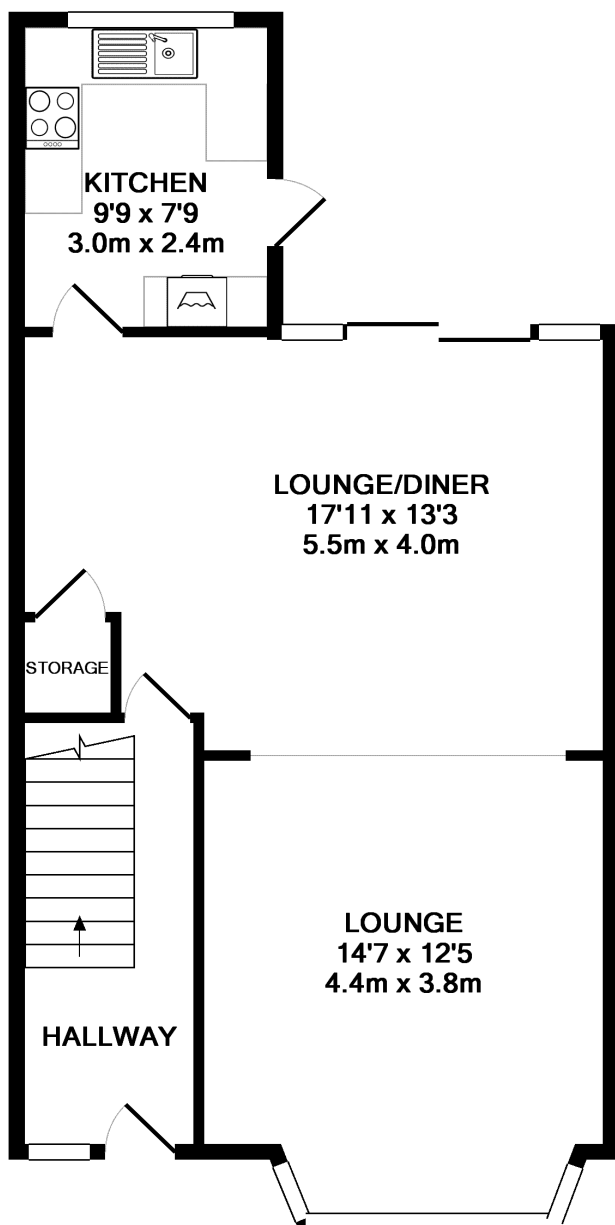
A high standard three bedroom terraced house situated in a Mock Tudor style building on the popular Hanger Hill Garden Estate. The property is offered unfurnished or part furnished and comprises the following; two good size bedrooms and one single, bright through lounge with dining area with doors leading to a well kept garden, modern fitted kitchen, family bathroom with shower cubicle, garage, garden and on street permit parking.

Walking distance to West Acton tube station (Central line) and North Ealing (Piccadilly line). Good bus service from Hanger Lane and access to the A40 and North Circular Road.

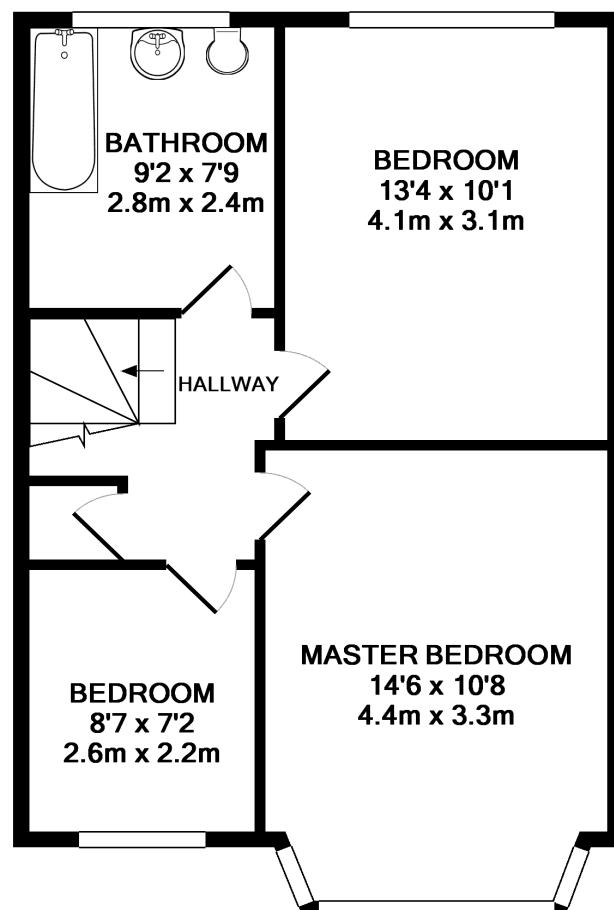
Local schools in the area include The Ellen Wilkinson School for Girls, The Holy Family Catholic School, West Acton Primary School, The Japanese School and Twyford C of E High School.

Available beginning of May.

Tenant fees apply: £180 tenancy handling fee (Inclusive of VAT); £60 referencing fee per adult (Inclusive of VAT). Other fees may apply.



GROUND FLOOR
APPROX. FLOOR
AREA 553 SQ.FT.
(51.4 SQ.M.)



1ST FLOOR
APPROX. FLOOR
AREA 477 SQ.FT.
(44.3 SQ.M.)

TOTAL APPROX. FLOOR AREA 1030 SQ.FT. (95.7 SQ.M.)

Whilst every attempt has been made to ensure the accuracy of the floor plan contained here, measurements of doors, windows, rooms and any other items are approximate and no responsibility is taken for any error, omission, or mis-statement. This plan is for illustrative purposes only and should be used as such by any prospective purchaser. The services, systems and appliances shown have not been tested and no guarantee as to their operability or efficiency can be given
Made with Metropix ©2012

Contact Details

Sales, Lettings & Property
Management

2 Queens Drive,
West Acton,
London,
W3 0HA

www.japanservices.co.uk
properties@japanservices.co.uk
0208 752 0445

