



# Japan Services

Sales, Lettings & Property Management

2 Queens Drive, West Acton, London, W3 0HA

Tel: 0208 752 0445 Fax: 0208752 0219

www.japanservices.co.uk email: properties@japanservices.co.uk



## Court Way, Acton W3 0PY

**PRICE:** Offers in the region of **£639,950**

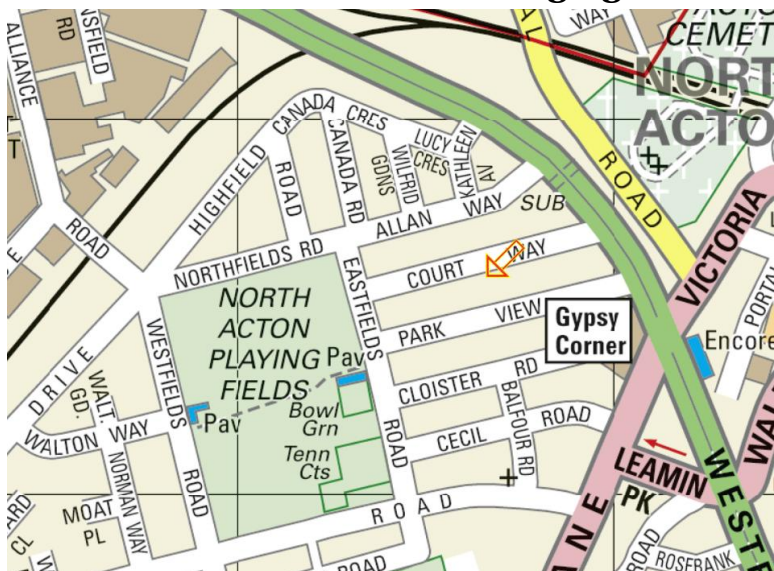


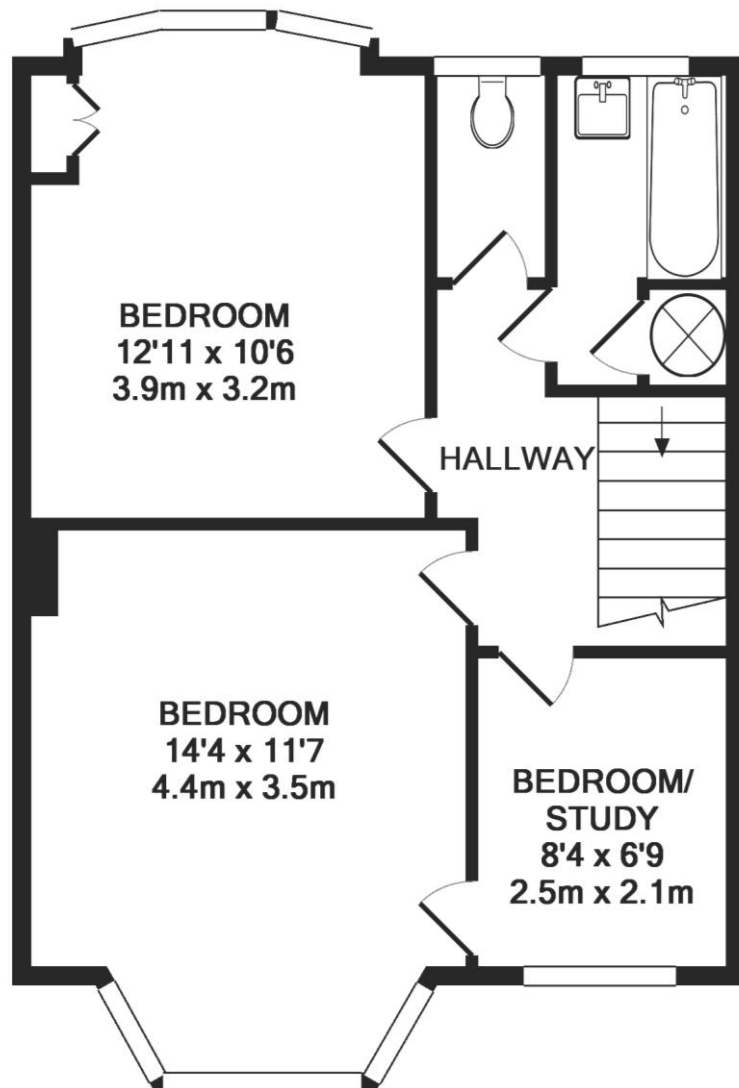
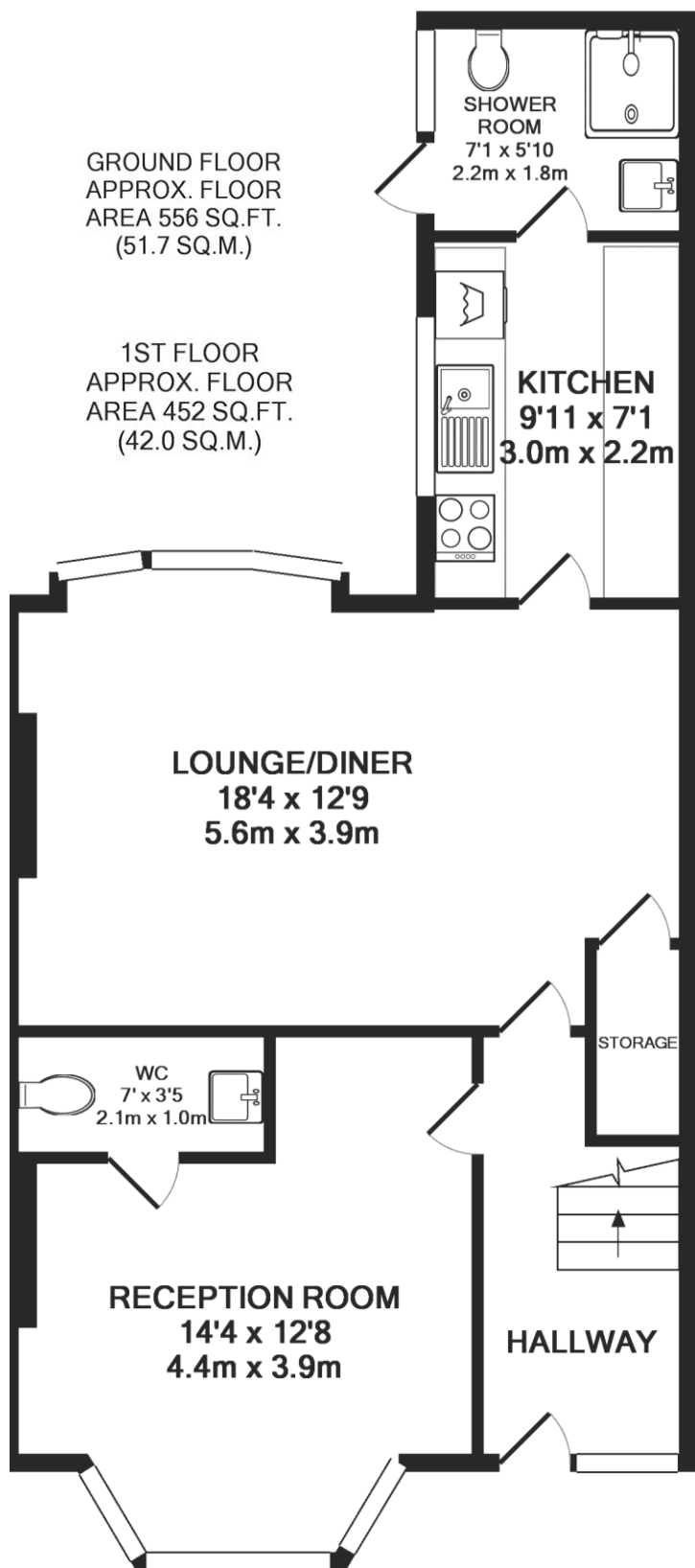
**This is a well-positioned three bedroom mid-terraced house in one of Acton's popular areas. The property would benefit from refurbishment. The large garden and 2 garages are suited to development such as extension and a loft conversion.**

**The property comprises:**

- \* Three well proportioned bedrooms
- \* separate living room and a dining room
- \* it boasts three WC's, tiled bathroom as well as a brand new shower room
- \* Fitted kitchen with range of appliances

**Only three minutes away from green open spaces of North Acton Playing Fields Walking distance to North Acton and West Acton (Central line) tube stations and immediate access to the A40. West Acton Primary is near, among other great schools.**





**TOTAL APPROX. FLOOR AREA  
1008 SQ.FT. (93.7 SQ.M.)**

Whilst every attempt has been made to ensure the accuracy of the floor plan contained here, measurements of doors, windows, rooms and any other items are approximate and no responsibility is taken for any error, omission, or mis-statement. This plan is for illustrative purposes only and should be used as such by any prospective purchaser. The services, systems and appliances shown have not been tested and no guarantee as to their operability or efficiency can be given  
Made with Metropix ©2018

**PLEASE NOTE :** All property measurements are approximate and have been taken with electronic distance measuring tool into bays and alcoves as appropriate. These particulars do not form part of any offer or contract nor can their accuracy be relied upon by purchaser, who should satisfy themselves by inspection or otherwise. No responsibility can be accepted for any loss of expenses incurred in viewing. Services, heating appliances, any security system and drain systems have not been tested. Particulars of the tenure, Freehold or Leasehold and Ground Rent, Service/Maintenance Charges are All **SUBJECT TO CONFIRMATION** by the vendor's Conveyances. Internal photographs are reproduced for general information and it must not be inferred that any item shown therein is included with the property