



Cloister Road | Acton | W3 0DF

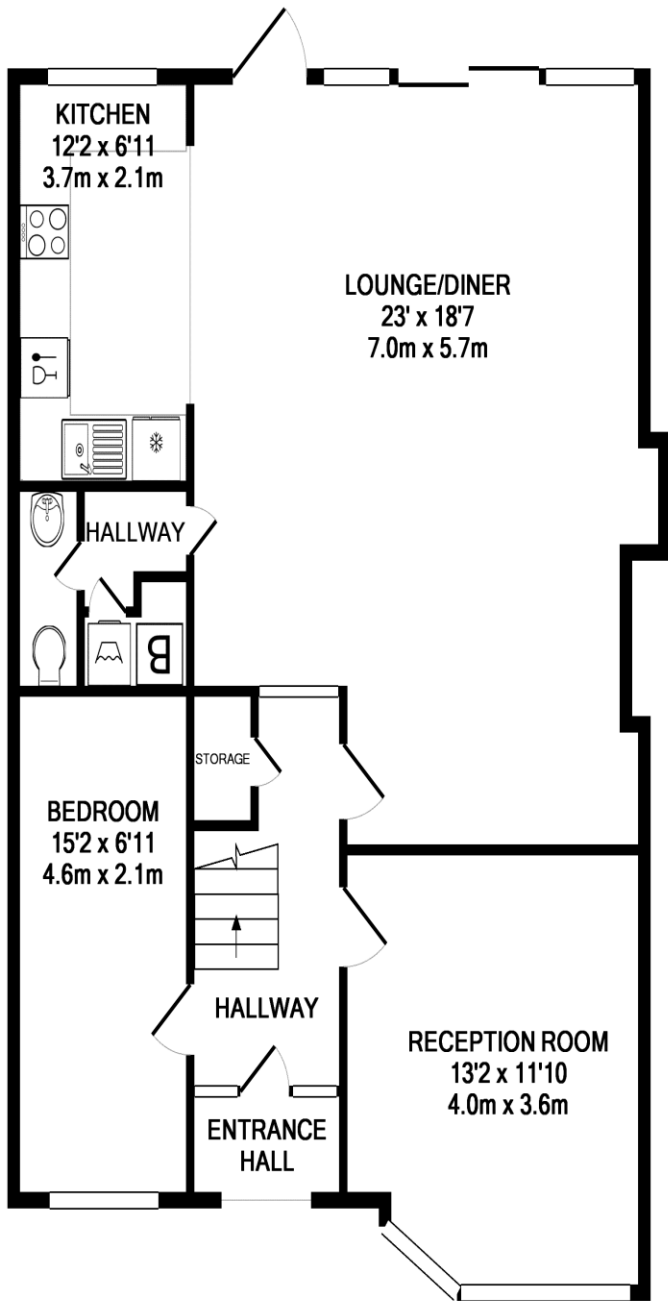
**£2,850 per month**

A stunning newly refurbished four bedroom semi-detached house offering magnificent living space & located close to the open space of North Acton Playing Fields. The property is offered unfurnished and comprises as follows; four double bedrooms, an extensive lounge with dining area, beautiful modern kitchen, luxurious family bathroom, well-kept garden and off street parking.

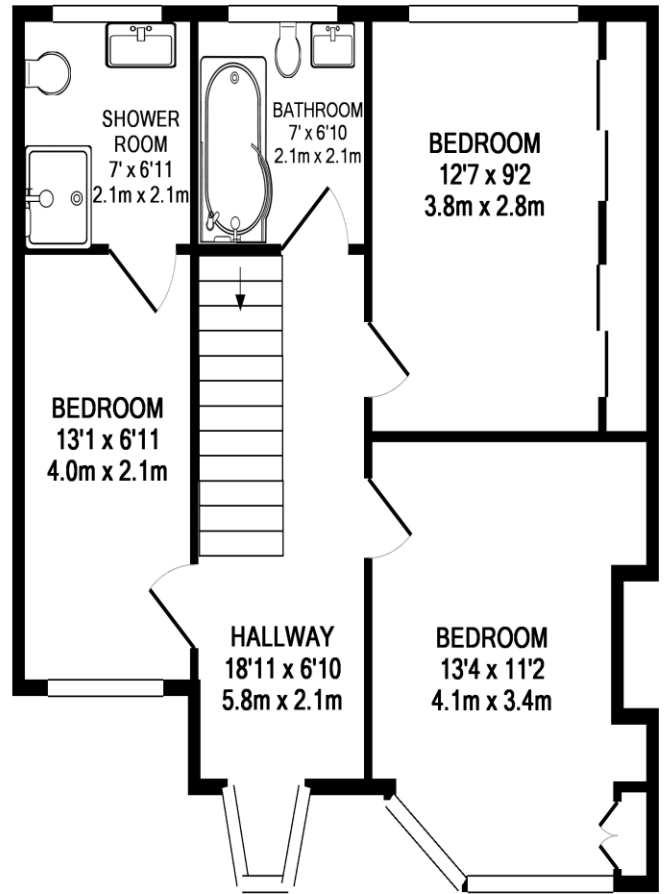
Transport links include North Ealing tube (Piccadilly line) and West Acton (Central line) and bus service from Hanger Lane. Motorists benefit from immediate access to the A40 and North Circular Road.

Local schools in the area include The Ellen Wilkinson School for Girls, The Holy Family Catholic School, West Acton Primary School, The Japanese School and Twyford C of E High School.

**Available now.**



GROUND FLOOR  
APPROX. FLOOR  
AREA 852 SQ.FT.  
(79.2 SQ.M.)



1ST FLOOR  
APPROX. FLOOR  
AREA 580 SQ.FT.  
(53.9 SQ.M.)

TOTAL APPROX. FLOOR AREA 1432 SQ.FT. (133.0 SQ.M.)

Whilst every attempt has been made to ensure the accuracy of the floor plan contained here, measurements of doors, windows, rooms and any other items are approximate and no responsibility is taken for any error, omission, or mis-statement. This plan is for illustrative purposes only and should be used as such by any prospective purchaser. The services, systems and appliances shown have not been tested and no guarantee as to their operability or efficiency can be given  
Made with Metropix ©2015

Contact Details

Sales, Lettings & Property Management

2 Queens Drive,  
West Acton,  
London,  
W3 0HA

www.japanservices.co.uk  
properties@japanservices.co.uk  
0208 752 0445

Energy Efficiency Rating		Current	Potential
Very energy efficient - lower running costs			
(92-100) <b>A</b>			
(81-91) <b>B</b>			
(69-80) <b>C</b>			
(55-68) <b>D</b>			
(39-54) <b>E</b>			
(21-38) <b>F</b>			
(1-20) <b>G</b>			
Not energy efficient - higher running costs			
		71	85

Environmental Impact (CO <sub>2</sub> ) Rating		Current	Potential
Very environmentally friendly - lower CO <sub>2</sub> emissions			
(92-100) <b>A</b>			
(81-91) <b>B</b>			
(69-80) <b>C</b>			
(55-68) <b>D</b>			
(39-54) <b>E</b>			
(21-38) <b>F</b>			
(1-20) <b>G</b>			
Not environmentally friendly - higher CO <sub>2</sub> emissions			
		67	83

England & Wales

EU Directive

England & Wales

EU Directive