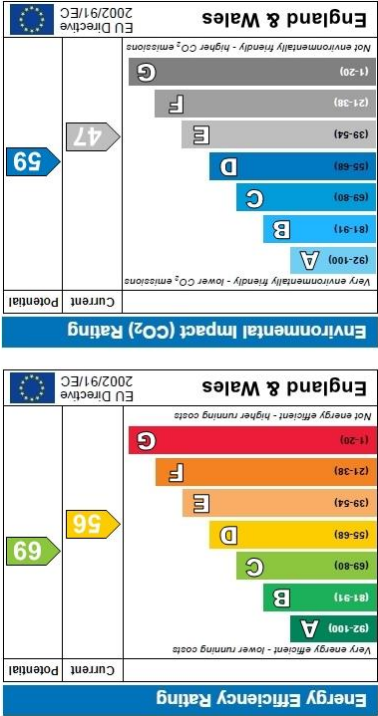
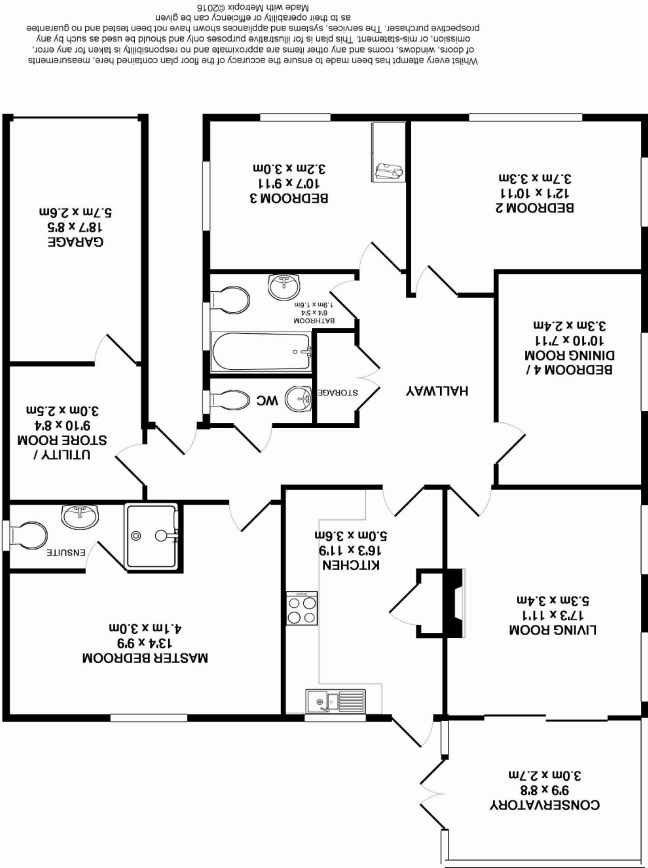




16 Bodowen Road, Burton, Christchurch, BH23 7JL



View by appointment with the agents



16 Bodowen Road, Burton, Christchurch, BH23 7JL

- 3/4 bedroom detached bungalow
- Modernised and extended over the years
- Bright & spacious accommodation
- recently added conservatory
- Delightful secluded gardens with direct access to sports field
- Workshop & garage
- Modern bathroom & en-suite shower room with additional cloakroom
- Council tax band 'D'
- A beautiful home too good to miss!



£469,950



SPACIOUS AND BEAUTIFULLY PRESENTED HOME WITH A DELIGHTFUL SECLUDED WEST FACING GARDEN!

This three/four bedroom detached bungalow is situated at the end of a quiet cul-de-sac, and offers bright and airy accommodation, which has been extended and improved over the years by the current owners, and comprises four double bedrooms with one currently used as a separate dining room, and an en-suite shower room to the master, a bathroom and separate cloakroom, a living room leading to the recently added conservatory, a kitchen/diner, spacious reception hall, all in addition to a garage and a workshop/store room.

The gardens are a real feature of the property with a delightful array of plants and shrubs creating a beautiful and colourful environment. The rear offers a westerly aspect, ideal if you want plenty of sun in your garden, in addition to complete seclusion. To the front a tarmac drive provides ample off road parking and leads to the garage.