



7, Pedley Way,
Bedford MK41 0GF

Taylor
Brightwell



An opportunity to purchase an 80% share of this modern three bedroom semi-detached house well positioned on the edge of this popular development with countryside views and approximately 3 miles from the town centre.

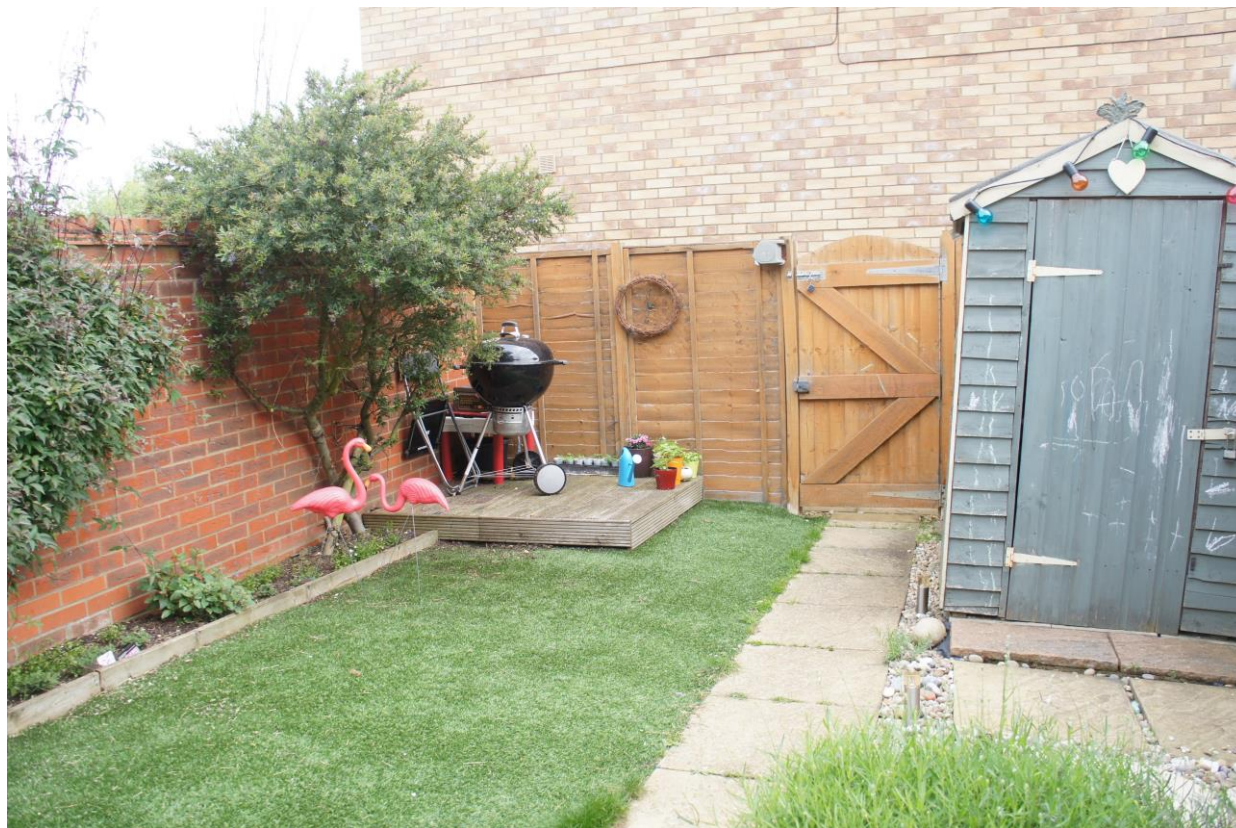
The well presented accommodation includes an entrance hall with cloakroom, a separate lounge, kitchen/diner with integrated oven and hob, a conservatory, three good sized bedrooms and a family bathroom.

There is an enclosed rear garden and two allocated parking spaces.

The property is situated within the Renhold school catchment area and is convenient for many local amenities including supermarkets, local shops and countryside walks.

- * UPVC double glazing
- * Gas radiator heating
- * Countryside outlooks
- * Three Bedrooms
- * Conservatory
- * Two parking spaces

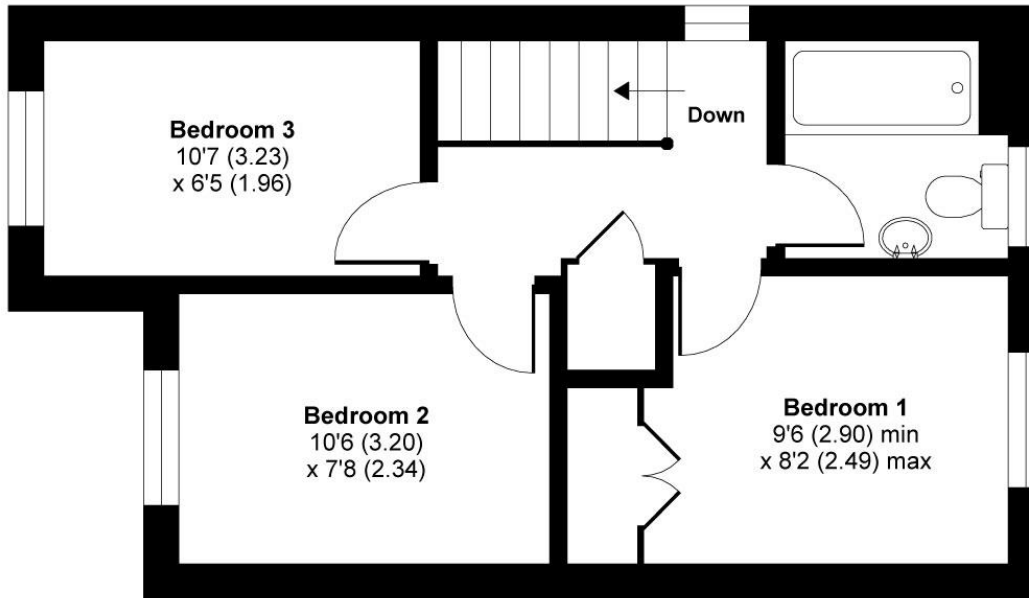
£188,000 freehold
(Shared ownership 80%)



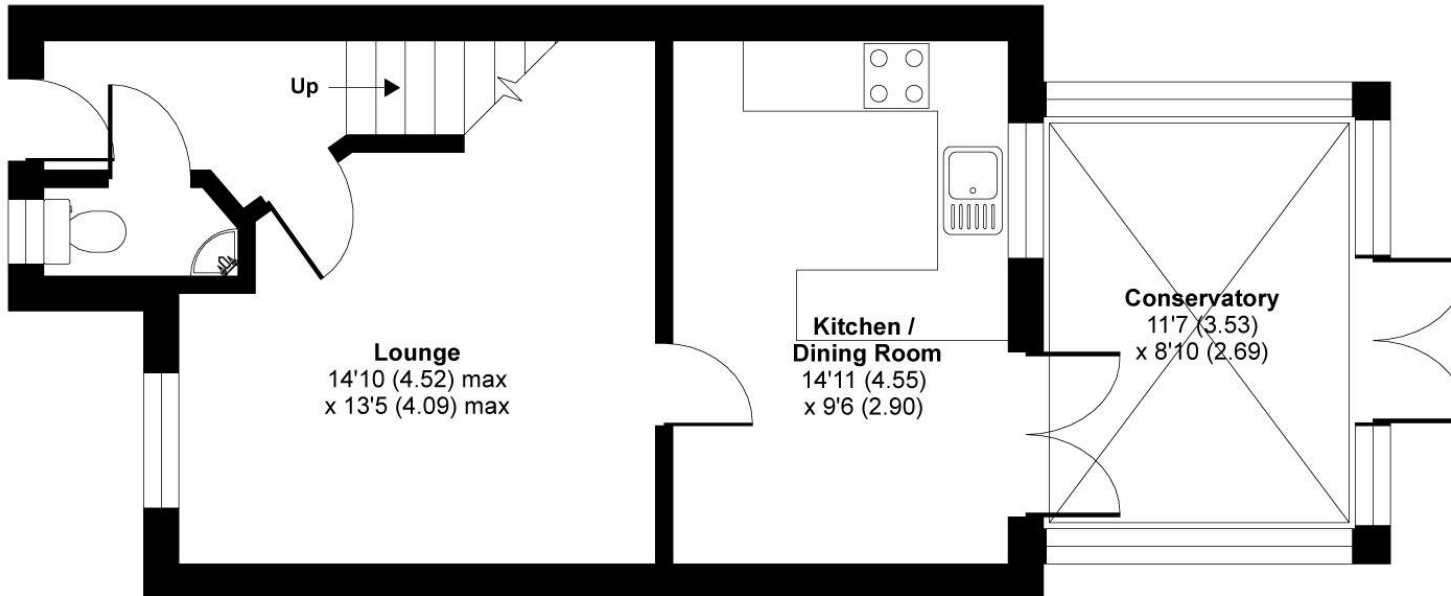
"Hassett House", Hassett Street, Bedford MK40 1HA

www.taylorbrightwell.co.uk property@taylorbrightwell.co.uk

01234 326444



FIRST FLOOR



GROUND FLOOR

APPROX. GROSS INTERNAL FLOOR AREA 863 SQ FT 80.2 SQ METRES

Whilst every attempt has been made to ensure the accuracy of the floor plan contained here, measurements of doors, windows and rooms are approximate and no responsibility is taken for any error, omission or misstatement. These plans are for representation purposes only as defined by RICS Code of Measuring Practice and should be used as such by any prospective purchaser. Specifically no guarantee is given on the total square footage of the property if quoted on this plan. Any figure given is for initial guidance only and should not be relied on as a basis of valuation.

