

# BROADLANDS

EST.

THE NUMBER **ONE** AGENT AT  
NUMBER **ONE** LIBRARY PLACE

1973



**NO 6 CARTREF APARTMENTS LA RUE DU FROID VENT, ST. SAVIOUR, JE2 7LJ**

**£550,000 || Ref 944**

- EXCLUSIVE DEVELOPMENT
- LARGE BALCONY
- HIGH SPECIFICATION
- SHARE TRANSFER
- 2 BEDROOM, 2 BATHROOM APARTMENT
- GARAGE AND 1 PARKING SPACE
- 1,063 SQ FT

OPEN VIEWING SATURDAY THE 25TH JULY  
FROM 11 AM TO 12 PM  
EXCLUSIVE NEW DEVELOPMENT HIDDEN  
AWAY IN THE HEART OF ST SAVIOUR! Luxury  
purpose built 2 bedroom, 2 bathroom first floor  
apartment with a roof terrace. Overlooking a  
beautiful communal lawned garden within a  
woodland setting. The property is spacious and  
light throughout and offers a generous size  
living area, modern kitchen with separate utility  
room, plus single garage and additional parking  
space. With over 1,063 sq ft of quality  
accommodation in a tranquil setting, take the  
opportunity to book your viewing now as the  
development is close to completion.

#### Entrance Hall

Storage cupboard.

#### Lounge/Diner



Spacious room with door leading onto balcony.

#### Kitchen



Range of high and low kitchen units with  
integrated Neff appliances. Corian worktops  
with under mount sink.

#### Utility Room



Plumbed for washing machine and tumble dryer.

Master Bedroom



Generous double.

Bedroom 2



Double room.

En-Suite Shower Room



Three piece suite comprising shower cubicle, wash hand basin and W.C.

Bathroom



Three piece suite comprising bath with shower unit, wash hand basin and W.C.

Communal Gardens

### Balcony



Decked balcony.

### Garage & Parking

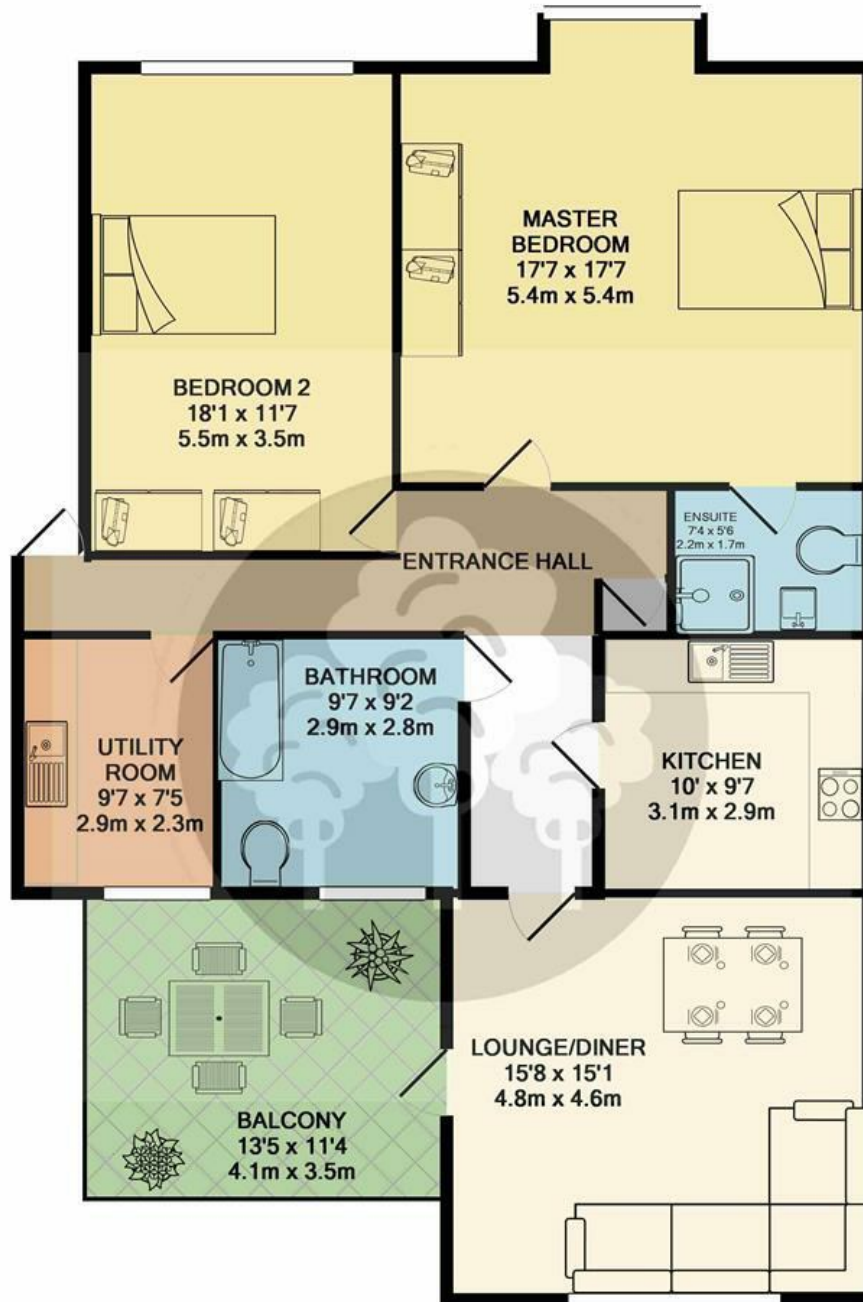
Single garage and additional parking.

### Services

All mains excluding gas. Double glazed. Electric heating. Service charges £130 pcm.



**DIRECTIONS:** JT MAP 15A G4, Travelling down La Rue Froid Vent take a left directly before Bon Air Nursing home, follow the lane to the end.



Whilst every attempt has been made to ensure the accuracy of the floor plan contained here, measurements of doors, windows, rooms and any other items are approximate and no responsibility is taken for any error, omission, or mis-statement. This plan is for illustrative purposes only and should be used as such by any prospective purchaser. The services, systems and appliances shown have not been tested and no guarantee as to their operability or efficiency can be given.  
Made with Metropix ©2018

## DISCLAIMER

These details are set out are for guidance and do not constitute any part of an offer or contract. Applicants should not rely on them as statements or representations of fact or that the property or its services or any systems or equipment are in good and working condition. Any reference to alterations to, or use of, any part of the property is not a statement that any planning, building regulations or other consent has been obtained. Title, planning and survey matters must be verified by any applicant taking advice from their appropriate professional adviser. No person being a principal, employee or consultant of Broadlands, has the authority to make or give any representation or warranty in respect of the property.