



BROADLANDS

1 Library Place, St Helier, Jersey, JE2 3NL

Tel: 01534 880770

enquiries@broadlandsjersey.com

www.broadlandsjersey.com



Murchison House La Route Orange, Jersey, JE3 8GQ **£3,250,000 R315 Freehold**

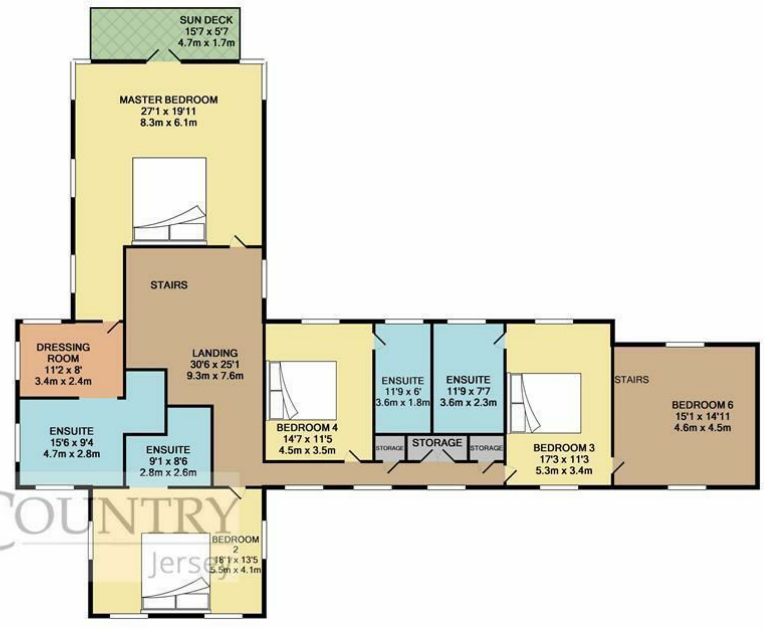
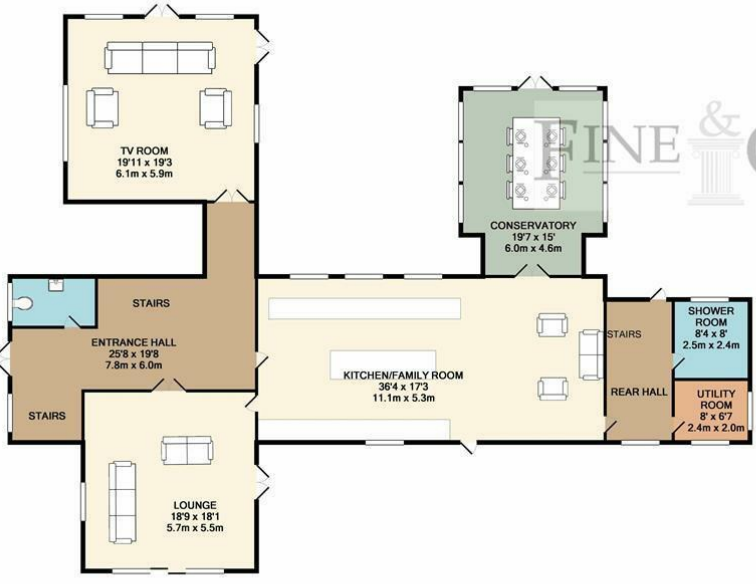
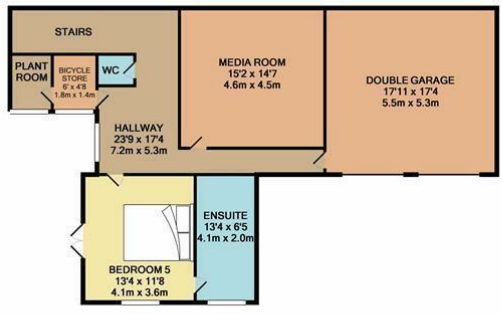
- PEACEFUL RURAL LOCATION YET CLOSE TO AMENITIES
- APPROXIMATELY 5500 SQ FEET OF ACCOMMODATION
 - SUPERB LIVE IN KITCHEN BREAKFAST ROOM
- 6 BEDROOMS 4 BATHROOMS PLUS CINEMA ROOM AND GYM
- SOUTH FACING GARDENS PLUS SWIMMING POOL WITH CHILD SAFE COVER
- PRIVATE DRIVEWAY APPROACH WITH GATED ENTRANCE
 - DOUBLE GARAGE AND STORE
- CALL NIGEL HURST ON 07797718233 TO VIEW

TRULY A MODERN MASTERPIECE. CONTEMPORARY RESIDENCE BUILT HOME WITH A COLONIAL THEME. Finished three years ago to an extremely high standard with top quality fixtures and fittings, the new owner will want for nothing. All rooms are bright and spacious with plenty of natural light throughout. Featuring 6 double bedrooms plus more rooms at lower ground floor level that could be used as cinema room, gym or possibly an integral unit.

Spectacular live in kitchen is the hub of this exquisite home with centre island and huge dining area. Main reception rooms lead out on to a delightful South/West facing garden with swimming pool and pool house, perfect for entertaining in total privacy. All bedrooms are of a good size with ample bathrooms to serve. The flexible accommodation could provide for a multi generation family if required with a great teenagers or granny annex.

Located in the heart of Les Creux country park in a haven of peace and tranquillity. St Ouen's bay is a short drive in one direction with the beautiful St Brelades Bay in the other. Shopping facilities at nearby Red Houses include Waitrose, M&S, and plenty of others. A small convenience store is a five minute walk away next to the excellent local primary school. For travellers the airport is less than 10 minutes drive.

The full package, book your appointment to view by calling Nigel Hurst on 07797718233



GROUND FLOOR
APPROX. FLOOR AREA: 220 SQ.FT. (208.1 SQ.M.)

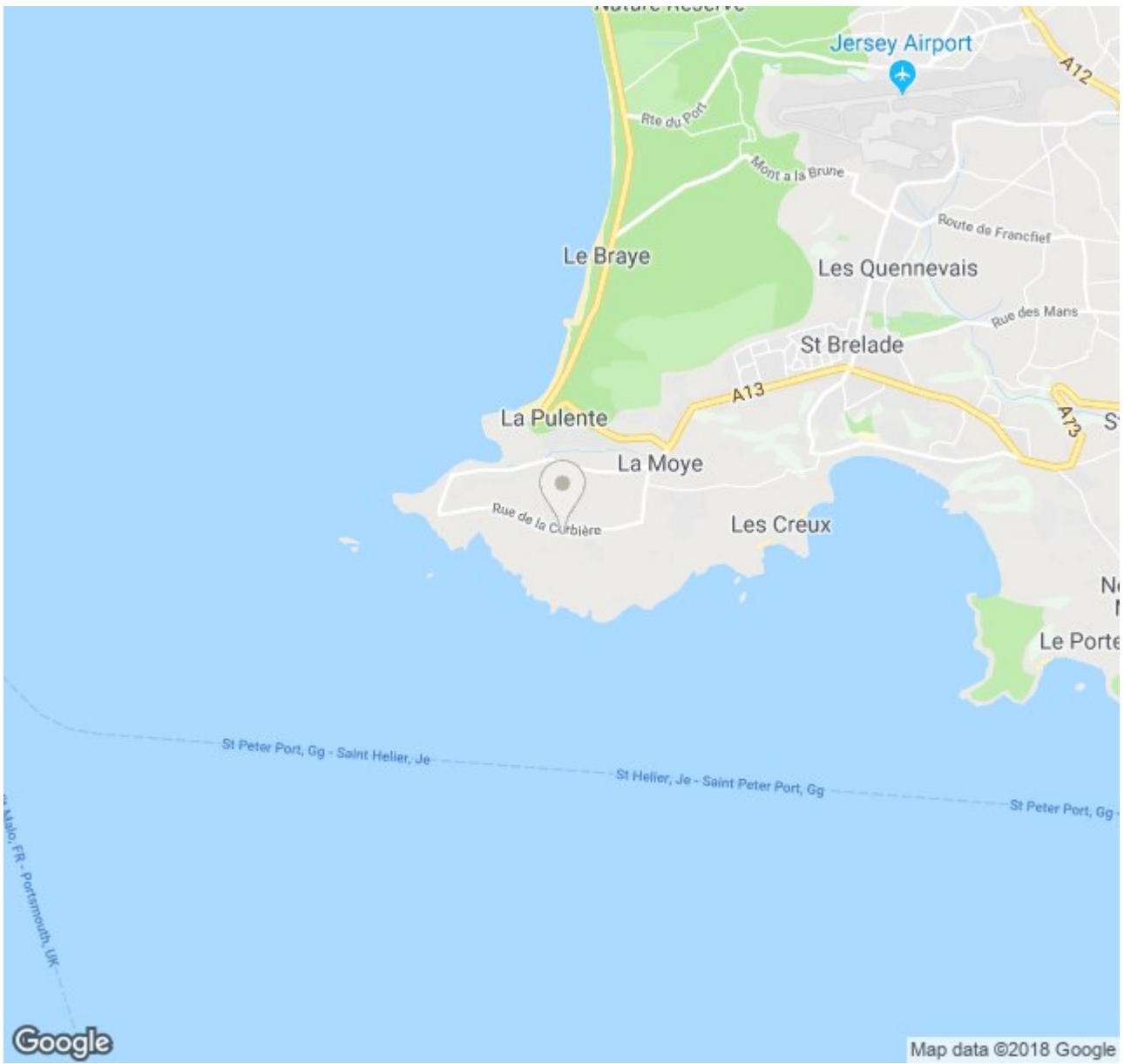
1ST FLOOR
APPROX. FLOOR AREA: 209 SQ.FT. (193.0 SQ.M.)

TOTAL APPROX. FLOOR AREA 5380 SQ.FT. (499.8 SQ.M.)
 Whilst every attempt has been made to ensure the accuracy of the floor plan contained here, measurements of doors, windows, rooms and any other items are approximate and no responsibility is taken for any error, omission, or mis-statement. This plan is for illustrative purposes only and should be used as such by any prospective purchaser. The services, systems and appliances shown have not been tested and no guarantee as to their operability or efficiency can be given.
 Made with Metropix ©2017



BROADLANDS

1 Library Place, St Helier, Jersey, JE2 3NL
 Tel: 01534 880770
 enquiries@broadlandsjersey.com
 www.broadlandsjersey.com



Directions:



BROADLANDS

1 Library Place, St Helier, Jersey, JE2 3NL

Tel: 01534 880770

enquiries@broadlandsjersey.com

www.broadlandsjersey.com