



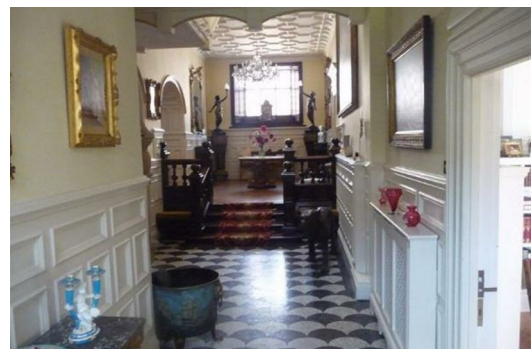
BROADLANDS

1 Library Place, St Helier, Jersey, JE2 3NL

Tel: 01534 880770

enquiries@broadlandsjersey.com

www.broadlandsjersey.com



St Peters House Route Des Hetres, ST PETER JE3 7DS **£8,950,000 R206 Freehold**

- PRESTIGIOUS, HISTORIC, COUNTRY ESTATE
- SUBSTANTIAL MAIN HOUSE PLUS COACH HOUSE, SEPARATE FARM HOUSE AND STAFF COTTAGE
- EXTENSIVE RANGE OF OUTBUILDINGS, HEATED SWIMMING POOL AND LARGE ENCLOSED KITCHEN GARDEN

TRULY SUPERB MANORIAL RESIDENCE SET IN AN IDYLLIC RURAL LOCATION, SURROUNDED BY OVER 20 ACRES OF ITS OWN LAND! Although well away from the flight path, it is just a five minute drive from Jersey Airport and only a short stroll to all the amenities in St Peter's Village. At least three golf courses are within ten minutes and the beach is even closer.

In excellent order throughout, the manor house has ten bedrooms and six bathrooms plus five receptions, conservatory, games room and large family kitchen. A particularly impressive feature is a spectacular double minstrel's gallery in the entrance hall, something thought to be quite unique in Jersey.

There are numerous outbuildings plus a recently renovated four bedroom, two bathroom farmhouse and another separate bungalow, ideal for staff, family or guests.

One of the top houses in the Island that must be viewed to be appreciated. Please call Roger Trower on 07797711194 for more information.

Bathroom

Bathroom

Bathroom

Bathroom

Bathroom

Bathroom

Bedroom

Bedroom

Bedroom

Bedroom

Bedroom

Bedroom

Bedroom

Bedroom

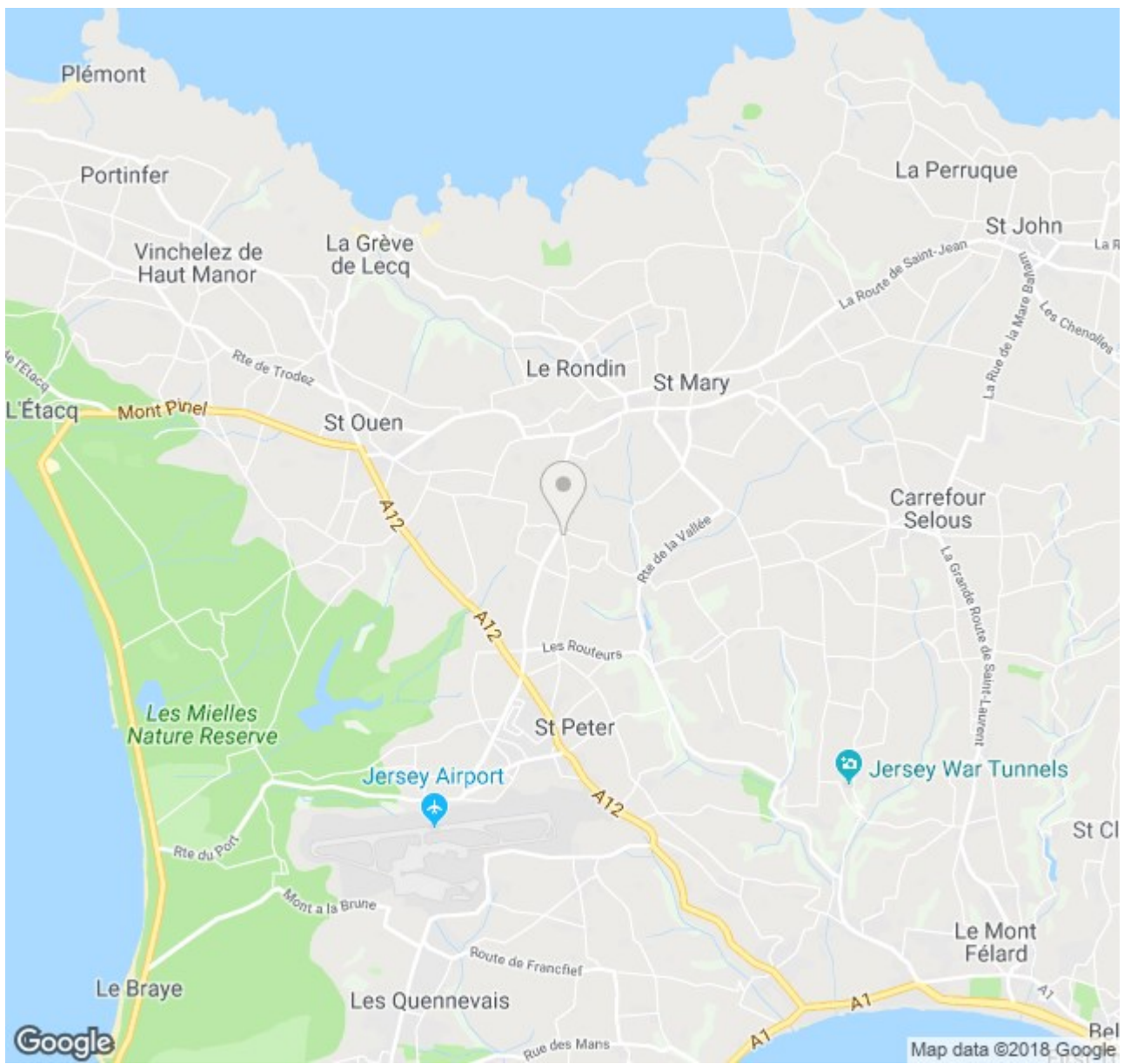
Bedroom

Bedroom



BROADLANDS

1 Library Place, St Helier, Jersey, JE2 3NL
Tel: 01534 880770
enquiries@broadlandsjersey.com
www.broadlandsjersey.com



Directions:



BROADLANDS

1 Library Place, St Helier, Jersey, JE2 3NL

Tel: 01534 880770

enquiries@broadlandsjersey.com

www.broadlandsjersey.com