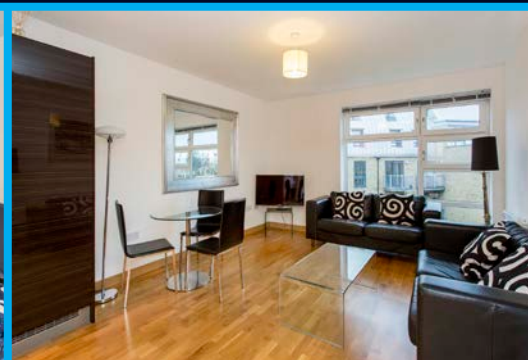




— dreampad — where beautiful homes live —



High Specification 2 Bedroom Apartment

82 Elder Court | Mead Lane | Hertford | Hertfordshire | SG13 7FZ

£1,200 PCM + Fees (See Over*)

Property Particulars

Situated in this sought after development, a stones throw from Hertford East Station and Hertford town centre, a luxury 2 bedroom apartment which is modern light and airy throughout. There is a good size open plan lounge/kitchen a large master bedroom with a fitted wardrobe and a second double bedroom. Balconies with garden views. The property has allocated, secure underground parking.

Key Information

Available: 4th January 2016

Furnishing: Yes

EPC Rating: C

Council Tax: Band D

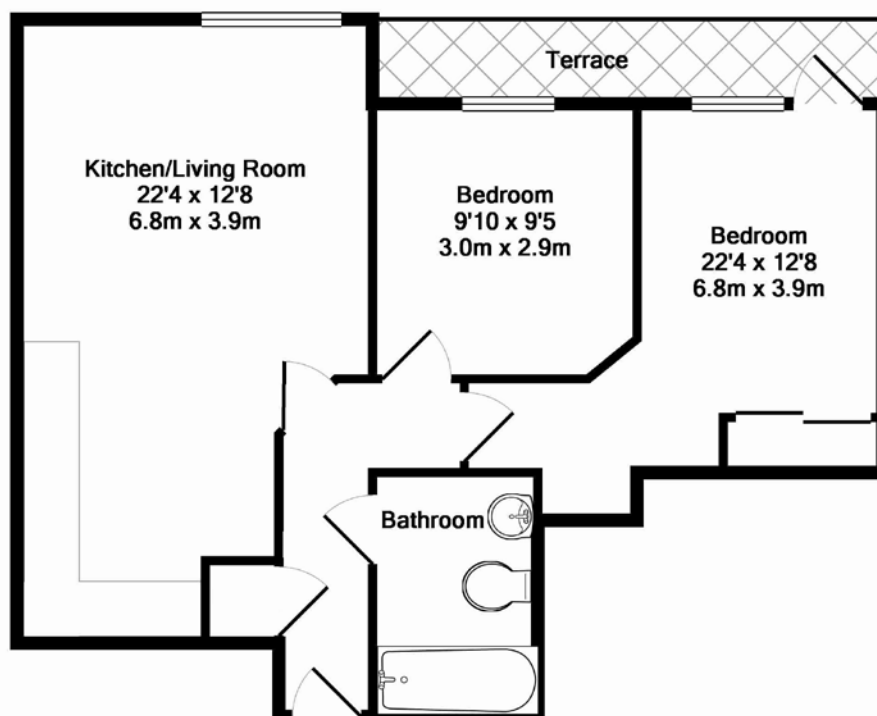
Local Authority: East Herts

Nearest Station: Hertford East - 0.1 miles

Fees* - (Further details of fees available via our website or upon request)

- 1) Administration Fee:** £180 Inc VAT per adult tenant for referencing and agreement creation
- 2) Non-Refundable Holding Deposit:** £250 (deducted from initial rental payment upon successful referencing and signature of tenancy)
- 3) Security Deposit:** (equal to 1.5 x the agreed monthly rental amount). Held securely with The Deposit Protection Service
- 4) Tenancy Renewal Fee:** (where applicable) £60 Inc VAT per adult tenant, per tenancy renewal

Floorplans



dreampad

Tel: 01992 661121
lettings@dreampad.com
www.dreampad.com

Members of The Property Ombudsman Scheme

