



dreampad

Ash House, The Maples

Goffs Oak | Waltham Cross | Herts | EN7 6ST





Kitchen / Breakfast Room





## **Goffs Oak, Herts - Imposing Spacious Family Residence In Exclusive Gated Development.**

Ash House, The Maples, Goffs Oak, Waltham Cross, Hertfordshire, EN7 6ST

Asking Price: £1,375,000

We are pleased to offer for sale this 5 double bedroom family home located in the heart of the highly sort after village of Goffs Oak within an exclusive gated development. In brief the accommodation on the ground floor includes incredibly impressive entrance hall with dual staircase, cloakroom, large lounge/ diner, study, dining room, conservatory, fitted kitchen, utility room and boiler room. On the first floor there are five double bedrooms all with en suite facilities.

Externally the property enjoys off street parking to the front as well as a separate driveway with additional off street parking for four vehicles, leading to a large double detached garage with work shop to the rear. gated side access leads to the rear garden which is mostly laid to lawn with mature flower and shrub borders, patio area, very private and SOUTH FACING.





Lounge





Conservatory





Other Ground Floor Images





Master Bedroom





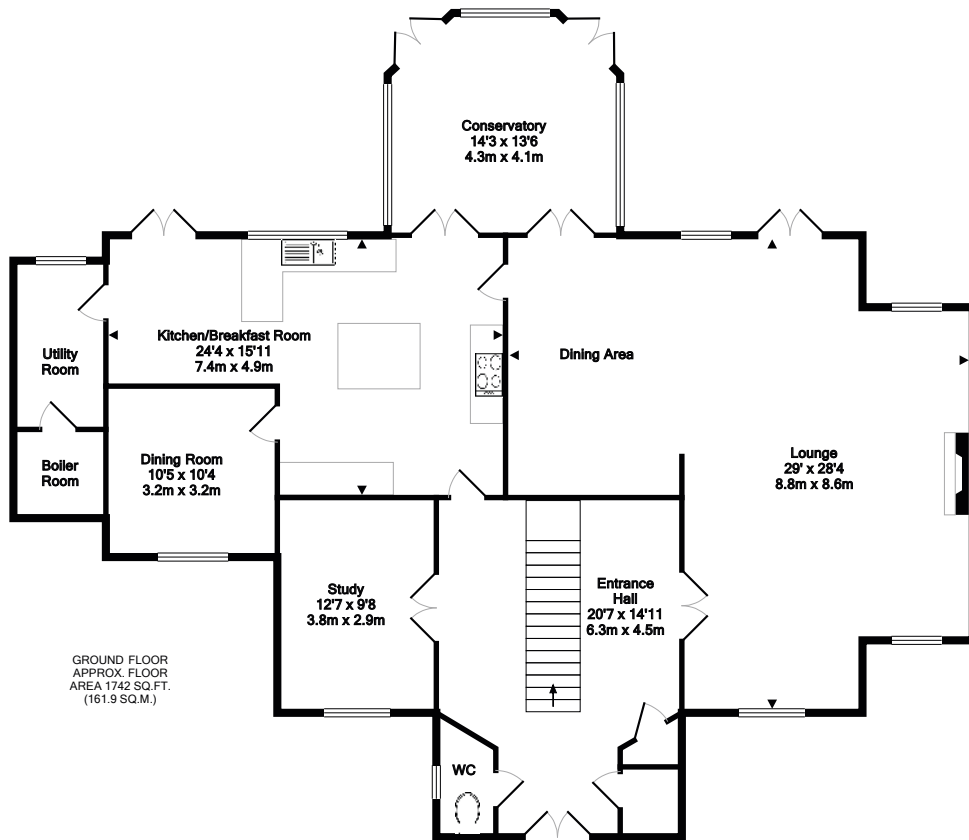
Bedrooms & En Suites



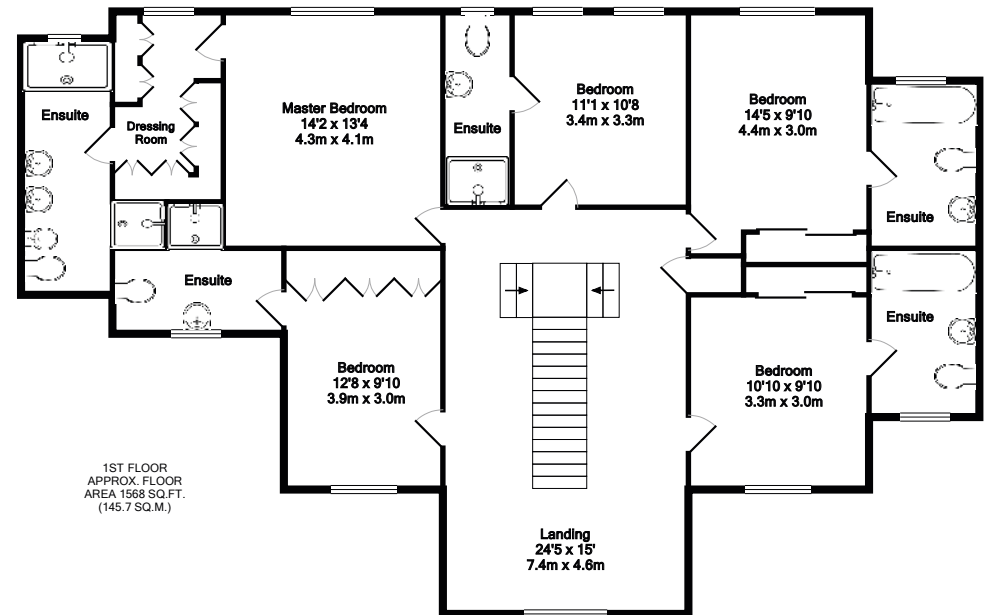


Rear Garden





TOTAL APPROX. FLOOR AREA 3311 SQ.FT. (307.6 SQ.M.)  
Made with Metropix ©2017







**Transport:** Cuffley Station (Finsbury Park) - 1.9 miles  
M25(J25) - 3.5 miles, A10 - 2.1 miles

**Services:** TBC

**Council Tax:** Band H

**Local Authority:** Broxbourne Council

### Important Notice:

Dreampad, their clients and any joint agents give notice that:

1. They are not authorised to make or give any representations or warranties in relation to the property either here or elsewhere, either on their own behalf or on behalf of their client or otherwise. They assume no responsibility for any statement that may be made in these particulars. These particulars do not form part of any offer or contracts and must not be relied upon as statements of representations of fact.

2. Any areas, measurements or distances are approximate. The text, photographs and plans are for guidance only and are not necessarily comprehensive. It should not be assumed that the property has all necessary planning, building regulations or other consents and Dreampad have not tested any services, equipment or facilities. Purchasers must satisfy themselves by inspection or otherwise.

Further Information





Tel: 0333 772 9775  
info@dreampad.com  
www.dreampad.com