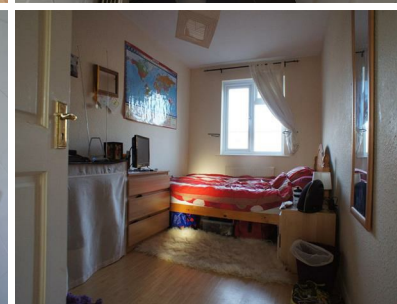


Crown Lane, London, N14 5HA

Unique Estates are pleased to offer this SPACIOUS 3 BEDROOM SPLIT LEVEL MAISONETTE to let to professional working tenants, the property has been completely redecorated throughout and benefits from a fitted kitchen, large lounge/diner, UPSTAIRS FAMILY BATHROOM, 3 x double bedrooms, fully double glazed and gas central heating.



£1,400 Per month



The property Misdescriptions Act 1991

Unique Estates Property Services are not qualified surveyors and this report is a description of what items are in the property. Please note Unique Estates Property Services do not test appliances or any fixtures, fittings, effects or services. A buyer is advised to obtain verification from their solicitor/surveyor for the above. The agent has not had sight of the title documents and references to the tenure of the property are based on information supplied by the vendor and should be verified by the buyers solicitors. All room sizes have been measured using an electronic sonic tape device, the accuracy of which cannot be guaranteed. Items shown in the photographs are not included unless arranged through the vendor and buyers solicitors. You are advised to make your own checks before contemplating a purchase, especially if exact measurement is of particular importance to you.