

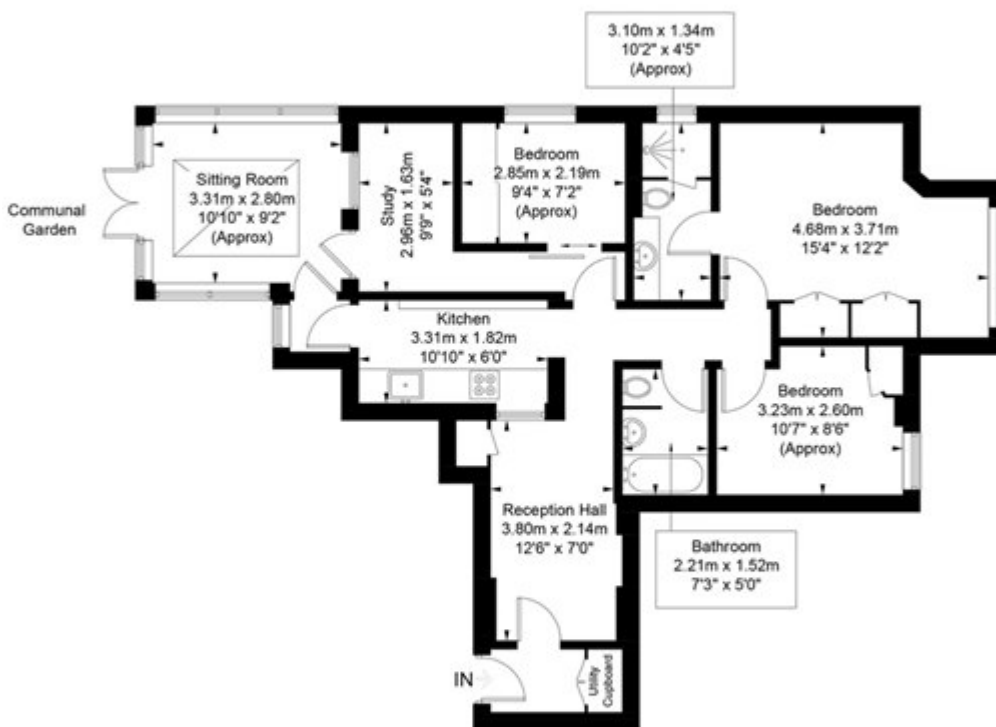
# Fitzjohn's Avenue, Hampstead

## £940,000 Share of Freehold

---

### Fitzjohn's Avenue

Approximate Gross Internal Area = 83.6 sq m / 900 sq ft



**Ground Floor**

Illustration for identification purposes only, measurements are approximate,  
not to scale. FloorplansUsketch.com © 2018 (ID466976)  
ELLIE CLAIRE PHOTOGRAPHY LTD