

Gunter Grove, Chelsea

£825,000 Leasehold

Gunter Grove, The Avenue, SW10

Approximate gross internal area
75 sq m / 807 sq ft
Excluding Terrace of
approximately
23 sq m / 248 sq ft

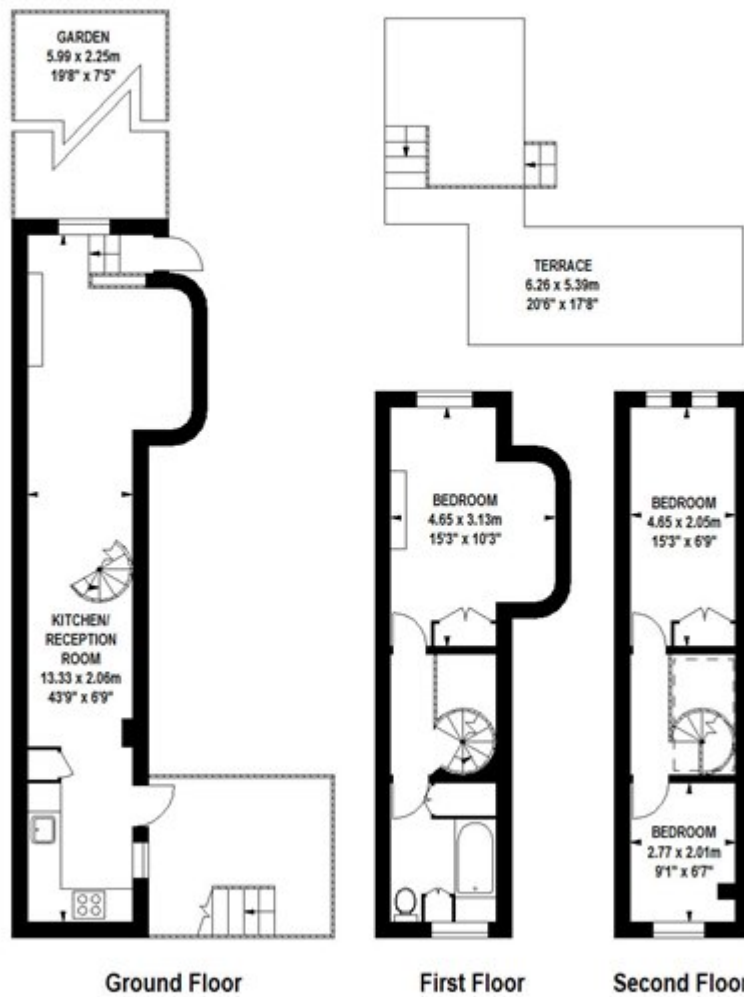


Illustration for identification purposes only, not to scale
All measurements are maximum, and includes wardrobes and window bays where applicable
Prepared by Mays Floorplans © . Tel 020 8871 4668