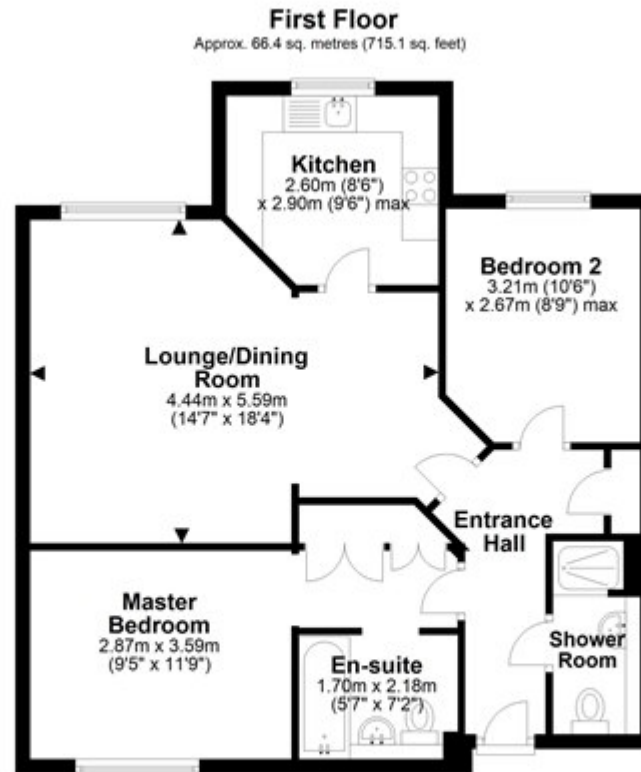


Sun Lane, Harpenden

£535,000 Leasehold



Total area: approx. 66.4 sq. metres (715.1 sq. feet)

Floorplan is not to scale and to be used for layout guidance only, any measurements shown should NOT be relied upon. Floor Area (Sq/m) includes all areas shown on plan except Balconies, Patios, Eaves, Garden and Parking Areas unless otherwise indicated.

Plan produced using PlanUp.