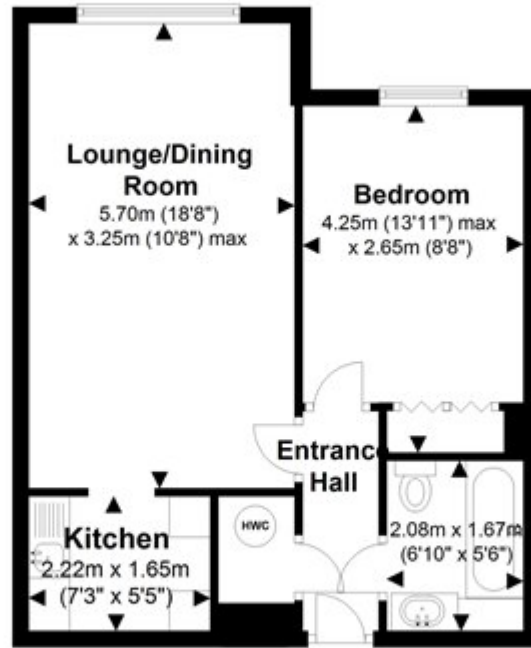


Roundwood Lane, Harpenden

Guide Price £149,950 Leasehold

First Floor

Approx. 41.7 sq. metres (448.4 sq. feet)



Total area: approx. 41.7 sq. metres (448.4 sq. feet)

This floor plan is a guide to layout and is for identification purposes only. It is not to scale and any measurements shown should not be relied upon. SQUARE FOOTAGE/METERAGE when shown INCLUDES ALL AREAS ON PLAN EXCEPT BALCONY/EAVES, unless otherwise indicated.
Plan produced using PlanUp.