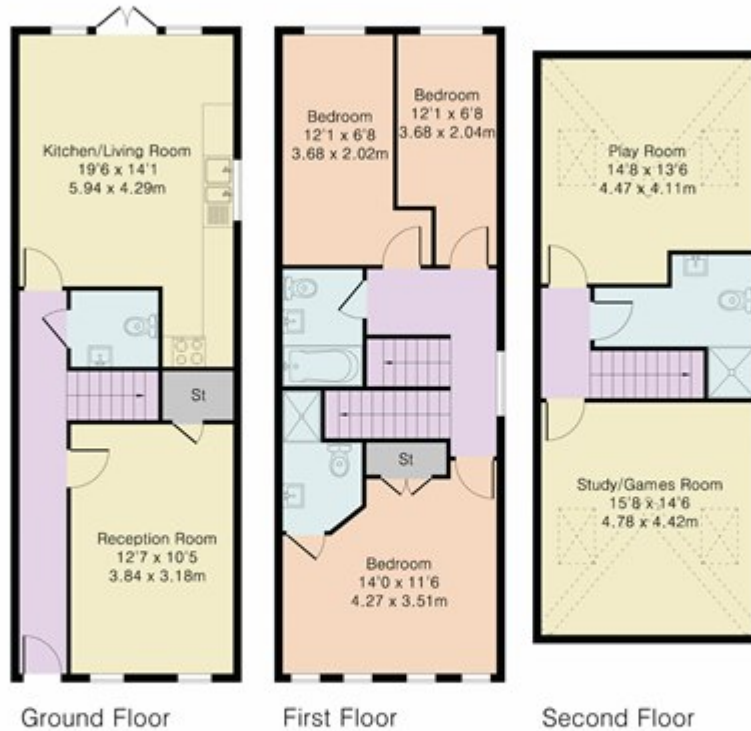


Luton Road, Harpenden

£3,000 PCM

Approximate Gross Internal Area 1658 sq ft – 154 sq m
Ground Floor Area 571 sq ft – 53 sq m
First Floor Area 571 sq ft – 53 sq m
Second Floor Area 516 sq ft – 48 sq m



Although Pink Plan Ltd ensures the highest level of accuracy, measurements of doors, windows and rooms are approximate and no responsibility is taken for error, omission or misstatement. These plans are for representation purposes only as defined by RICS code of measuring practice. No guarantee is given on total square footage of the property within this plan. The figure icon is for initial guidance only and should not be relied on as a basis of valuation.



Luton Road, Harpenden

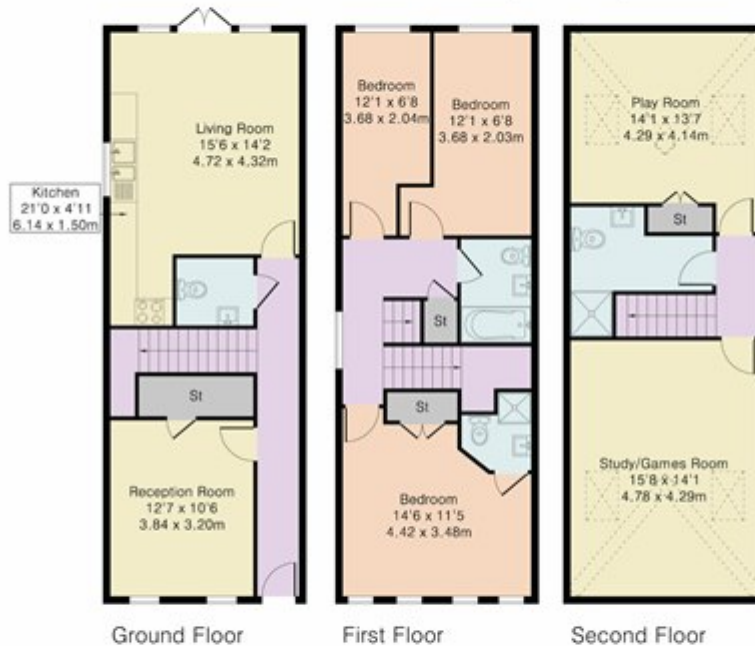
£3,000 PCM

Approximate Gross Internal Area 1713 sq ft – 159 sq m

Ground Floor Area 571 sq ft – 53 sq m

First Floor Area 571 sq ft – 53 sq m

Second Floor Area 571 sq ft – 53 sq m



Although Pink Plan Ltd ensures the highest level of accuracy, measurements of doors, windows and rooms are approximate and no responsibility is taken for error, omission or misstatement. These plans are for representation purposes only as defined by RICS code of measuring practice. No guarantee is given on total square footage of the property within this plan. The figure icon is for initial guidance only and should not be relied on as a basis of valuation.

