

Barnsdene, Harpenden

Guide Price £1,325,000 Freehold

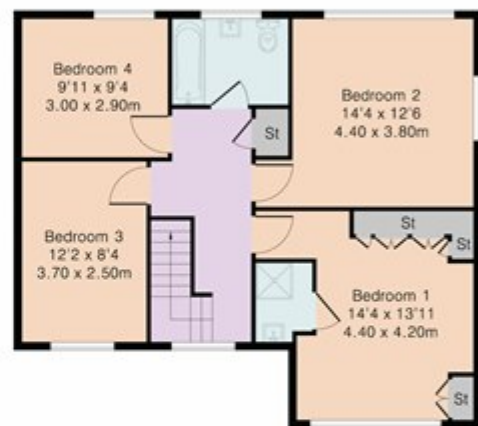
Approximate Gross Internal Area 1794 sq ft – 167 sq m

Ground Floor Area 1105 sq ft – 103 sq m

First Floor Area 689 sq ft – 64 sq m



Ground Floor



First Floor



Although Pink Plan Ltd ensures the highest level of accuracy, measurements of doors, windows and rooms are approximate and no responsibility is taken for error, omission or misstatement. These plans are for representation purposes only as defined by RICS code of measuring practise. No guarantee is given on total square footage of the property within this plan. The figure icon is for initial guidance only and should not be relied on as a basis of valuation.

