

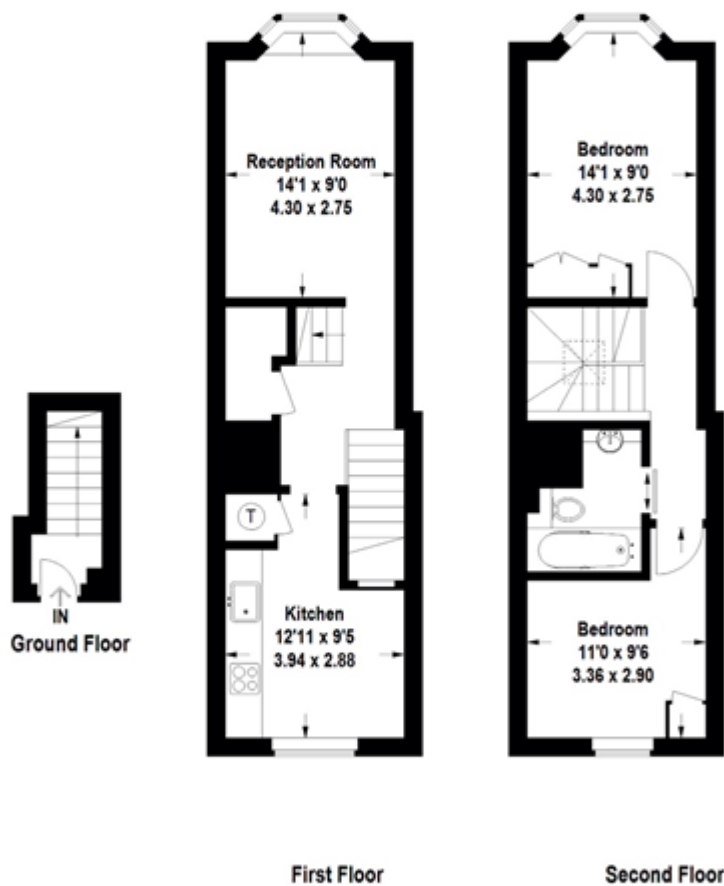
# South Edwardes Square, Kensington

## £595 PW

---

### South Edwardes Square, W8

Approximate Gross Internal Area  
Ground Floor = 2.9 sq m / 31 sq ft  
First Floor = 31.6 sq m / 340 sq ft  
Second Floor = 31.6 sq m / 340 sq ft  
Total = 66.1 sq m / 711 sq ft



This plan is for layout guidance only. Not drawn to scale unless stated. Windows and door openings are approximate. Whilst every care is taken in the preparation of this plan, please check all dimensions, shapes and compass bearings before making any decisions reliant upon them. (ID 127571)