

Birchgrove House, Kew Riverside Park, £490,000, Richmond, TW9 4DN

Flat 12, Birchgrove House, 4 Strand Drive, Richmond, TW9 4DN

Approximate Gross Internal Area = 73 sq m / 786 sq ft

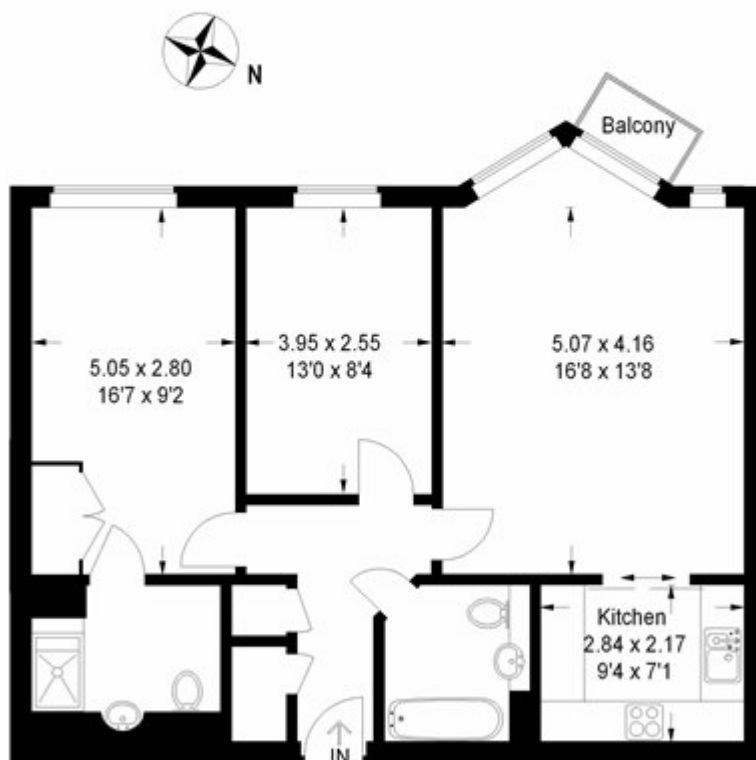


Illustration for identification purposes only, measurements are approximate, not to scale.
FloorplansUsketch.com © 2013 (ID69108)