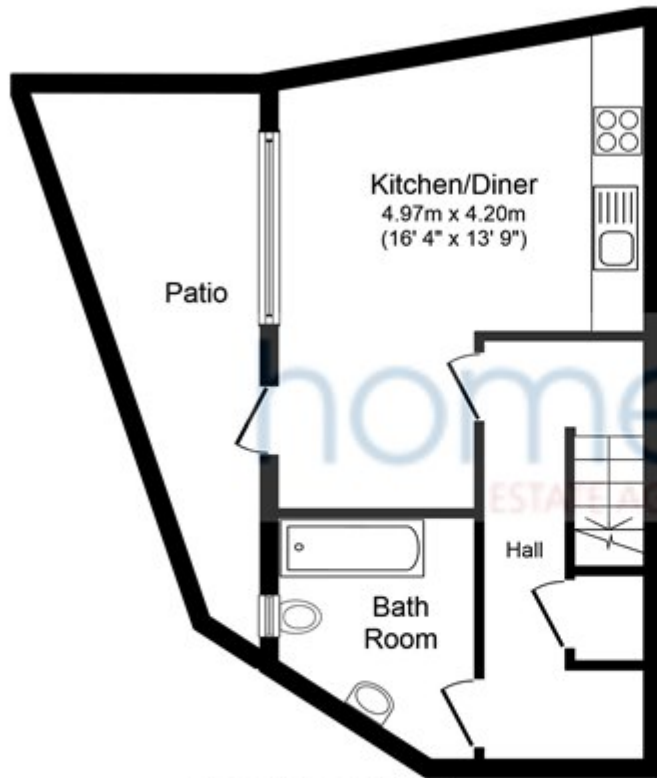


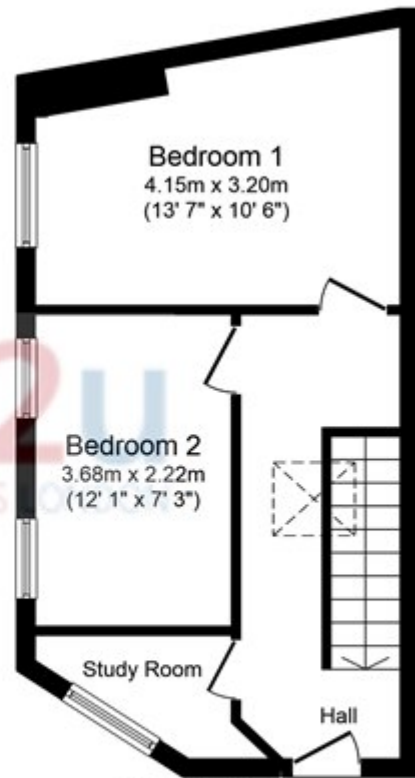
Ladywell Road, Ladywell

£1,250 PCM



Lower Ground Floor

Floor area 33.0 sq. m. (355 sq. ft.) approx



Ground Floor

Floor area 33.0 sq. m. (355 sq. ft.) approx

Total floor area 66.0 sq. m. (710 sq. ft.) approx

This plan is for illustration purposes only and may not be representative of the property.
Plan created for Home 2 U.

Produced by www.keyagent.co.uk