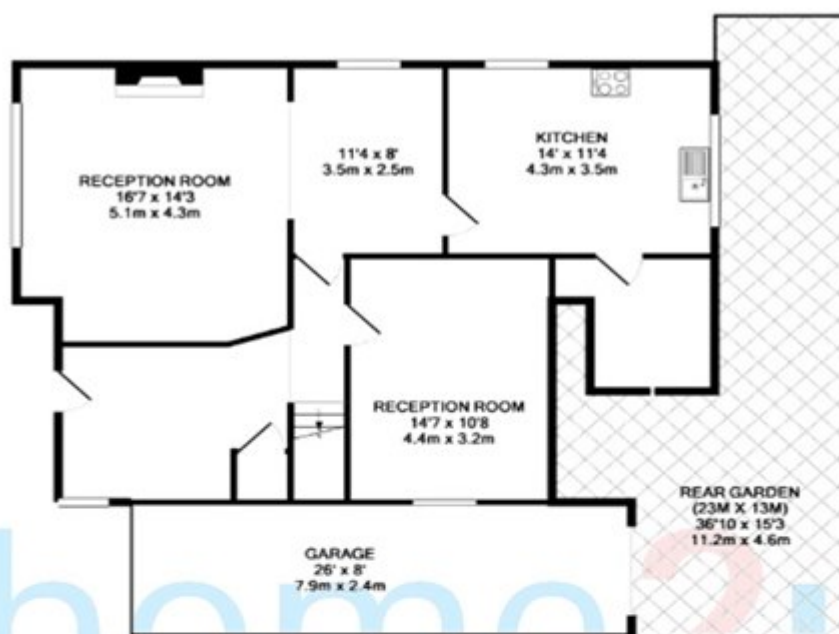
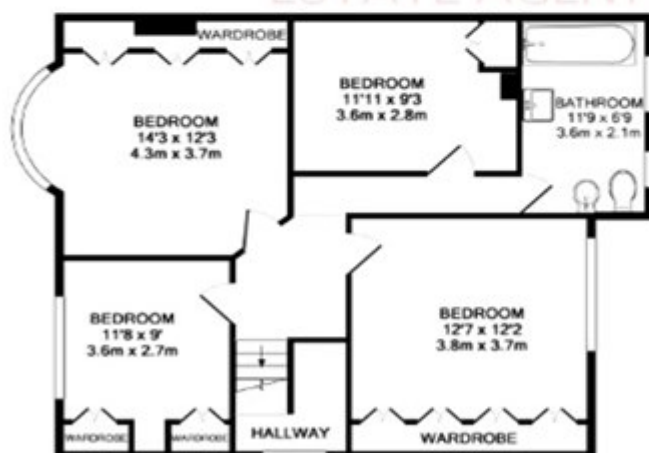


Grove Park Road, Mottingham

Offers in the Region Of £849,950



GROUND FLOOR
APPROX. FLOOR
AREA 1057 SQ. FT.
(98.2 SQ. M.)



1ST FLOOR
APPROX. FLOOR
AREA 759 SQ. FT.
(70.5 SQ. M.)

GROVE PARK ROAD, LONDON SE9
TOTAL APPROX. FLOOR AREA 1815 SQ. FT. (168.6 SQ. M.)
Made with Metropix 02017