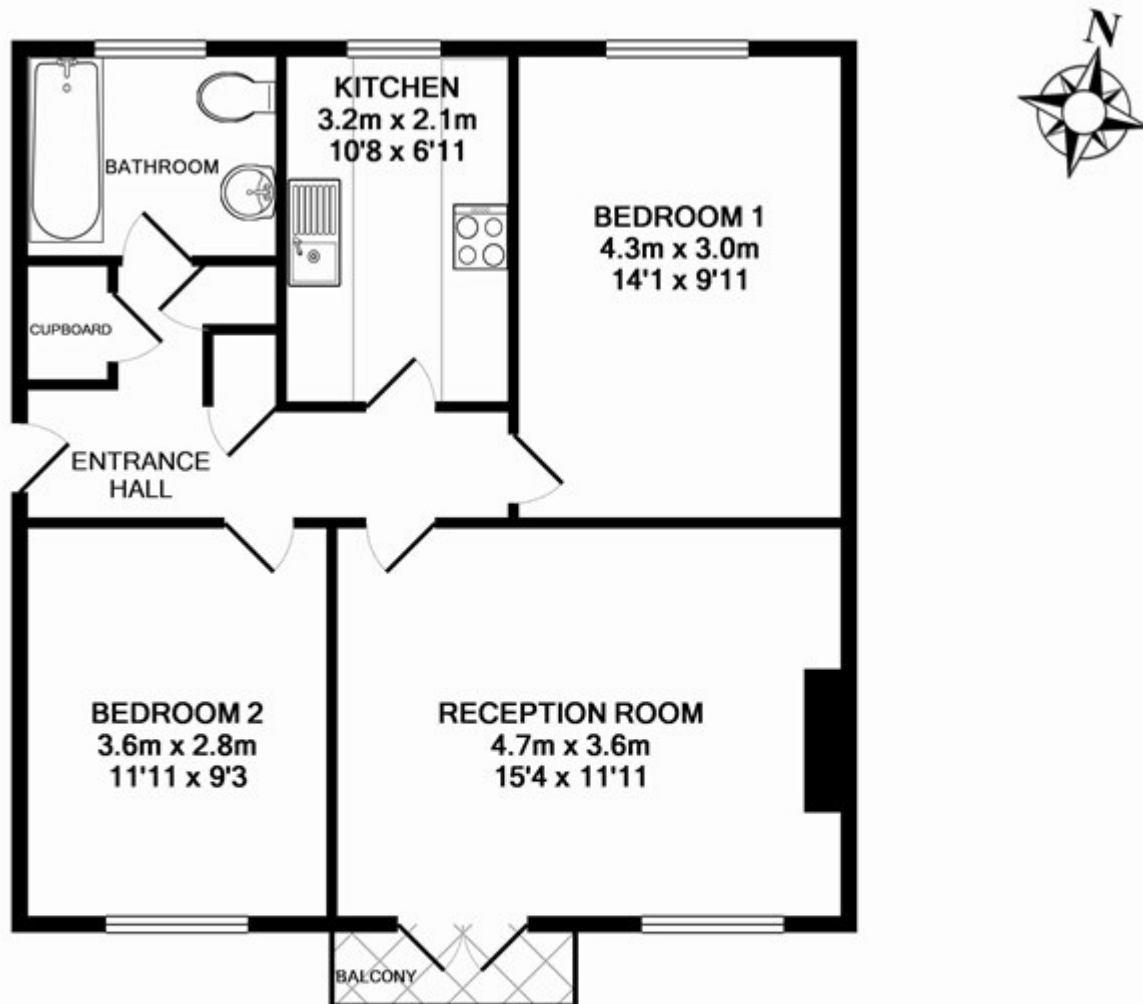


Woolwich Church Street

£250,000 Leasehold



324 WOOLWICH CHURCH STREET SE18 5ND
TOTAL APPROX. FLOOR AREA 58.8 SQ.M. (633 SQ.FT.)

KeyHIPS Floor Plans are produced and provided for illustration purposes only. Whilst every attempt has been made to ensure the plan is accurate and presents the property in the best way, measurements of doors, windows and rooms are approximate and no responsibility is taken for any error, omission or mis-statement. To find out more about KeyHIPS please visit www.keyhips.com
(Tel: 0845 475 4165)
Made with Metropix ©2010